

Report 28

Precise soil management as a tool to reduce CH₄ and N₂O emissions from agricultural soils

January 2007

Aan dit project is in het kader van het Besluit milieusubsidies, Subsidieregeling milieugerichte technologie een subsidie verleend uit het programma Reductie Overige Broeikasgassen dat gefinancierd wordt door het Ministerie van Volkshuisvesting, Ruimtelijke ordening en Milieubeheer. SenterNovem beheert deze regeling.

Projectnummer: 0377-03-01-01-012 (Broeikasgasemissiereductie door precisiebodembewerking)



Colofon

Publisher

Animal Sciences Group
P.O. Box 65, 8200 AB Lelystad
Telephon +31 320 - 238238
Fax +31 320 - 238050
E-mail info.po.asg@wur.nl
Internet <http://www.asg.wur.nl/po>

Editor

Communication Services

© Animal Sciences Group

All rights reserved. No parts of this publication may be reproduced, stored in a retrieval system of any nature, or transmitted in any form or by any means, electronic, mechanical, photocopying, recording or otherwise, without the prior written permission of the institute.

Liability

The publisher and authors declare that they have compiled this document carefully and to the best of their knowledge and therefore the publisher and author accept no liability whatsoever for any damage resulting from this contents

Abstract

Soil compaction stimulates the emission of nitrous oxide (N₂O) and methane (CH₄) from agricultural soils. N₂O and CH₄ are potent greenhouse gases, with a global warming potential respectively 296 times and 23 times greater than CO₂. Agricultural soils are an important source of N₂O. Hence there is much interest in a systematic evaluation of management options that are available to minimize agricultural greenhouse gas emissions, in particular N₂O soil emissions. One such option would be to minimize soil compaction due to the use of heavy machinery. Soil compaction in arable land is relatively general. Here we report that emissions of N₂O and CH₄ from an arable field where soil compaction was minimized through application of the so – called '*rijpaden*' (riding track) system was substantially lower than from plots where a traditional system was used. Laboratory experiments were used to underpin these observations. From these observations we developed a simple calculation model that relates N₂O emission to gas filled pore space and soil respiration as input parameters. We suggest to implement the riding track system on clay rather than sand as farmers benefit from lower compaction in terms of lower risk of compaction and better accessibility of fields for work. The potential reduction of the N₂O emission from arable farming in the Netherlands is estimated at ~169 ton N₂O-N per year (~0.1 Mton CO₂-equivalent). This calculation is based on several assumptions and would benefit from testing assumptions and monitoring effects in agricultural day to day practice.

ISSN 1570-8616

Mosquera, J. (ASG), J.M.G. Hol (ASG), C. Rappoldt (Alterra), J. Dolfin (Alterra)

Precise soil management as a tool to reduce CH₄ and N₂O emissions from agricultural soils (2007) Report 28

42 pages, 19 figures, 19 tables

Keywords: Agricultural soils, emissions, greenhouse gases, nitrous oxide, methane, soil compaction, fertilisation, soil water content, land use



ANIMAL SCIENCES GROUP
WAGENINGEN UR



ALTERRA
WAGENINGEN UR

Report 28

Precise soil management as a tool to reduce CH₄ and N₂O emissions from agricultural soils

J. Mosquera (ASG)
J.M.G. Hol (ASG)
C. Rappoldt (Alterra)
J. Dolfing (Alterra)

January 2007

Preface

This research was partially supported by the Netherlands' agency for innovation and sustainability (SenterNovem) and the Dutch Ministry of Agriculture, Nature and Food Quality (LNV). This report summarizes the results of a 2-year study dealing with the effects of soil compaction on the emissions of nitrous oxide (N₂O) and methane (CH₄) from agricultural soils. The results presented here are discussed in more detail in the following reports:

- Literature review: Mosquera (2005)
- Field measurements (Mosquera *et al.*, 2005a, 2005b)
- Laboratory experiments (Rappoldt *et al.*, 2006)

Short summary

Soil compaction stimulates the emission of nitrous oxide (N₂O) and methane (CH₄) from agricultural soils. N₂O and CH₄ are potent greenhouse gases, with a global warming potential respectively 296 times and 23 times greater than CO₂. Agricultural soils are an important source of N₂O. Hence there is much interest in a systematic evaluation of management options that are available to minimize agricultural greenhouse gas emissions, in particular N₂O soil emissions. One such option would be to minimize soil compaction due to the use of heavy machinery. Soil compaction in arable land is relatively general. Here we report that emissions of N₂O and CH₄ from an arable field where soil compaction was minimized through application of the so – called ‘rijpaden’ (riding track) system was substantially lower than from plots where a traditional system was used. Laboratory experiments were used to underpin these observations. From these observations we developed a simple calculation model that relates N₂O emission to gas filled pore space and soil respiration as input parameters. We suggest implementing the ‘rijpaden’ system on clay rather than sand as farmers benefit from lower compaction in terms of lower risk of compaction and better accessibility of fields for work. The potential reduction of the N₂O emission from arable farming in the Netherlands is estimated at ~169 ton N₂O-N (~0.1 Mton CO₂-equivalent) per year. This calculation is based on several assumptions and would benefit from testing assumptions and monitoring effects in agricultural day to day practice.

Keywords: Agricultural soils, Emissions, Greenhouse gases, Nitrous oxide, Methane, Soil compaction, Fertilisation, Soil water content, Land use

Verkorte samenvatting

Landbouwgronden zijn een belangrijke bron van de relatief sterke broeikasgassen lachgas (N₂O) en methaan (CH₄). Bodemverdichting als gevolg van het gebruik van zware machines op het land stimuleert de emissie van N₂O en CH₄. SenterNovem subsidieert onderzoek dat moet vaststellen of door de toepassing van het zogeheten rijpadensysteem bodemverdichting kan worden voorkomen of verminderd. Zo zou de emissie van broeikasgassen uit de akkerbouw kunnen worden verminderd. In dit rapport presenteren we gegevens over emissies uit een akkerbouwgrond waar bodemverdichting gereduceerd werd door het gebruik van het rijpadensysteem. De emissie van N₂O en CH₄ bij rijpaden en minder bodemverdichting was aanzienlijk lager dan de emissie uit controlevelden waar het land op traditionele wijze bewerkt werd. Op grond van veld- en laboratorium waarnemingen hebben we een eenvoudig model opgesteld waarin de emissie van N₂O beschreven wordt als functie van het gasgevulde poriegehalte en de bodemrespiratie. De landbouwers op kleigronden hebben (naar verwachting) het meeste voordeel van toepassing van het rijpadensysteem: ze kunnen zo na een natte periode eerder het land op, kleigrond is gevoeliger voor verdichting dan zand, en de vermeden emissie is op klei het grootst. De invoering van het rijpadensysteem zal kunnen leiden tot een vermindering van de N₂O emissie vanuit de Nederlandse akkerbouw van ~169 ton N₂O-N (~0.1 Mton CO₂-equivalenten) per jaar. Deze schatting is gebaseerd op een aantal aannames, en zal preciezer worden als deze aannames nader getest worden.

Trefwoorden: Landbouwbodems, emissies, broeikasgassen, lachgas, methaan, bodemverdichting, bemesting, watergehalte, gewas

Table of contents

Preface

Short summary

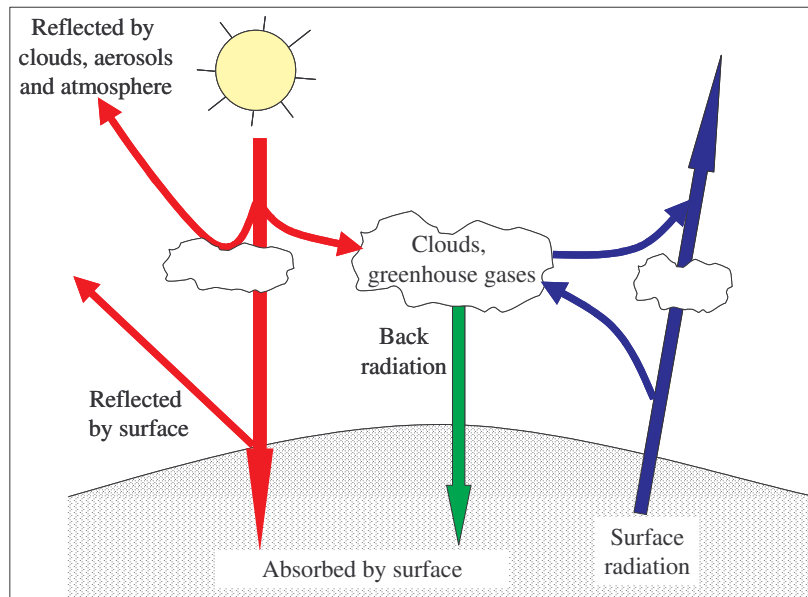
1	Introduction	1
1.1	Greenhouse gases and climate change.....	1
1.2	Greenhouse gas emission trends in the Netherlands	2
1.3	N ₂ O and CH ₄ emission/consumption processes in agricultural soils	3
1.4	Scope of this report.....	5
2	Factors controlling N₂O and CH₄ fluxes from soils: literature review	6
2.1	Soil compaction.....	6
2.2	Fertilization.....	7
2.3	Drainage and irrigation	9
2.4	Land use.....	10
2.5	Conclusions.....	11
3	Effect of soil compaction on N₂O and CH₄ fluxes from arable land: Field measurements	13
3.1	Materials and methods	13
3.1.1	Site characteristics and field management	13
3.1.2	Measurement methods.....	13
3.2	Results.....	14
3.2.1	Methane (CH ₄)	14
3.2.2	Nitrous oxide (N ₂ O)	16
3.3	Conclusions.....	17
4	Effect of soil compaction on N₂O and CH₄ fluxes from grassland soils: Field measurements	18
4.1	Materials and methods	18
4.1.1	Site characteristics and field management	18
4.1.2	Measurement methods.....	18
4.2	Results.....	19
4.2.1	Methane (CH ₄)	19
4.2.2	Nitrous oxide (N ₂ O)	20
4.3	Conclusions.....	20
5	Laboratory experiments	22
5.1	Materials and methods	22
5.2	Results and Discussion.....	22
6	Emission reduction through precise soil management in the Netherlands	25
7	Summary, main conclusions and recommendations	27
	Appendix A Factors affecting CH₄ and N₂O emission: literature review	29
	References	36

1 Introduction

1.1 Greenhouse gases and climate change

Greenhouse gases are present in the atmosphere as trace gases. They are transparent for incoming short-wave radiation from the sun, but do absorb and re-emit the outgoing infrared radiation from the Earth's surface, thereby warming the atmosphere (figure 1). This warming is referred to as "natural greenhouse effect".

Figure 1 The greenhouse effect



Greenhouse gases differ in their ability to absorb heat in the atmosphere. In order to be able to compare the emissions of all different greenhouse gases, the concept of Global Warming Potential (GWP) was introduced. The GWP expresses the emission of a gas in terms of carbon dioxide (CO₂) emissions (CO₂ equivalents). Since greenhouse gases have different lifetimes (IPCC, 2001; table 1), the GWP is always coupled to a particular time interval (time horizon). For example, on a molecular basis and over a 100-year time horizon, the GWP of methane (CH₄) is 23 times that of CO₂, and nitrous oxide (N₂O) has a GWP 296 times greater than carbon dioxide (IPCC, 2001; table 1).

Table 1 Some characteristics of the main greenhouse gases (IPCC, 2001)

Greenhouse gases	Pre-industrial concentration	Concentration in 1998	Atmospheric Lifetime [years]	Global warming potential (100 year time horizon)
Carbon dioxide (CO ₂)	280 ppmv	365 ppm	5-200	1
Methane (CH ₄)	700 ppbv	1745 ppbv	12	23
Nitrous oxide (N ₂ O)	270 ppbv	314 ppbv	114	296

The concentration of greenhouse gases remained relatively constant for about a thousand years before the industrial revolution. Since then, the concentration of various greenhouse gases has drastically increased. As an example, atmospheric concentrations of carbon dioxide have increased nearly 30%, CH₄ concentrations have more than doubled, and N₂O concentrations have risen by about 15% (IPCC, 2001; table 1). This has resulted in a positive radiative forcing, which tends to warm the surface ("enhanced greenhouse effect").

Concern about the enhanced greenhouse effect has prompted international action to reduce emissions. A first agreement, intended to stabilise emissions at 1990 levels by 2000, was signed in 1992 at the Earth Summit in Rio de Janeiro. A more binding agreement was reached at Kyoto, Japan, in 1997. Under the Kyoto Protocol (entry into force 16 February 2005), thirty industrialised countries are legally bound to reduce their combined emission of six major greenhouse gases during the five-year period 2008-2012 to below 1990 levels. The European Union, for example, should reduce by 8% its combined emissions. For the Netherlands, a reduction target of 6% has been assigned.

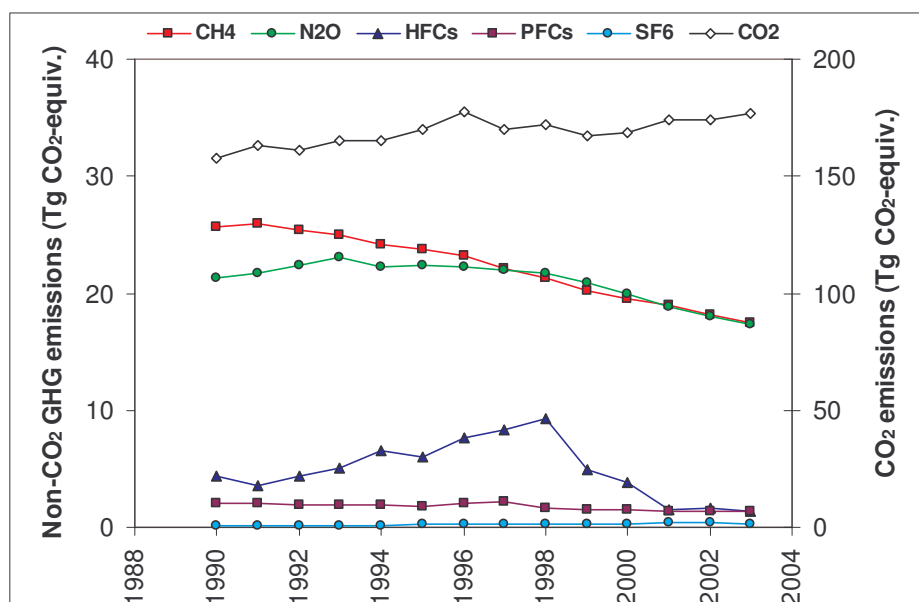
1.2 Greenhouse gas emission trends in the Netherlands

The UNFCCC and the Kyoto protocol specify six main greenhouse gases whose emissions should be reported:

- Carbon dioxide (CO₂)
- Methane (CH₄)
- Nitrous oxide (N₂O)
- Hydrofluorocarbons (HFCs)
- Perfluorocarbons (PFCs)
- Sulphur hexafluoride (SF₆)

Emissions of CO₂ increased in 2003 by about 12% relative to 1990 (figure 2), which is considered to be the reference year for the emissions of CO₂, CH₄ and N₂O. In contrast, the emissions of CH₄ and N₂O decreased (in the same period) by about 32% and 19%, respectively. The total emission of the fluorinated gases (HFCs, PFCs, SF₆) decreased by 60% in 2003 relative to 1995, the reference year for these gases. In particular, emissions of HFCs and PFCs decreased by about 75% and 25%, respectively, while SF₆ emissions increased by 11%.

Figure 2 Trend in greenhouse gas emissions in the Netherlands during the period 1990-2003. Source: Klein Goldewijk *et al.* (2005).



The contribution of CO₂ emissions to the total greenhouse gas emission in the Netherlands increased from approximately 75% in 1990, to 82% in 2003 (figure 3). CH₄ and N₂O are the most important non-CO₂ greenhouse gases in the Netherlands. Together they were responsible for about 16% of total greenhouse gas emissions in the Netherlands in 2003. Compared to CO₂, their contribution to the total emissions has been reduced by 6% since 1990.

Agriculture is the most important source of N₂O and CH₄ in the Netherlands (figure 4), and contributes about 8% to the total national greenhouse gas emissions in 2003 (10% in 1990). N₂O emissions are responsible for about 53% of total greenhouse gas emissions from agriculture, whereas CH₄ is responsible for the rest (47%). Emissions of N₂O from agriculture, mainly from agricultural soils (1: direct emissions through application of animal wastes/fertilizer to soils; 2: indirect emissions from nitrogen leaching and run-off), accounted for 54% of national total N₂O emissions. CH₄ emissions from agriculture accounted for 49% of the national total CH₄ emissions in 2003, and were related to enteric fermentation (75% of total agricultural CH₄ emissions) and animal waste management systems (25% of total CH₄ emissions from agriculture).

Figure 3 Shares of greenhouse gases in total emissions in the Netherlands in (A) the reference year (1990 for CO₂, CH₄ and N₂O; 1995 for F-gases), and in (B) the year 2003. Source: Klein Goldewijk *et al.* (2005).

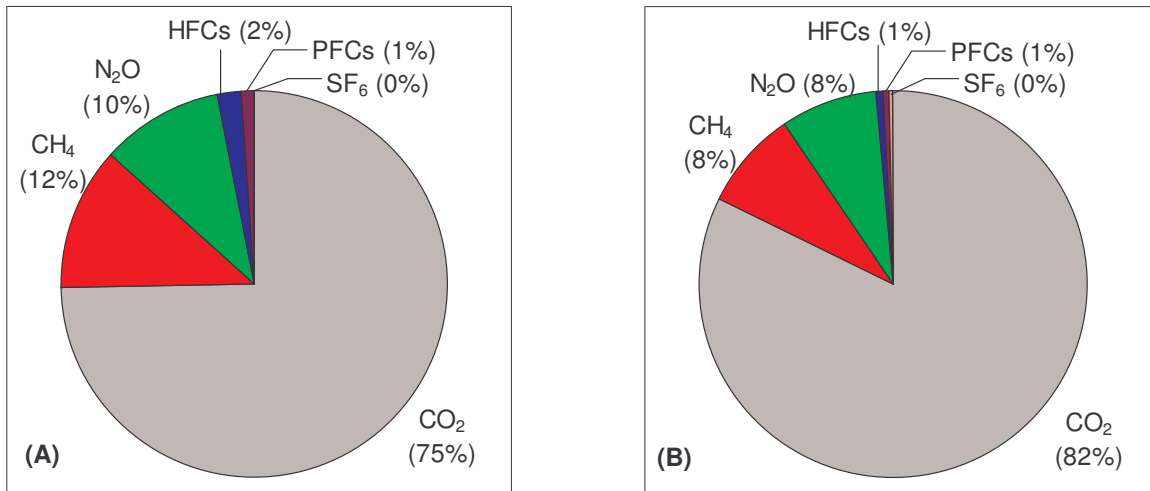
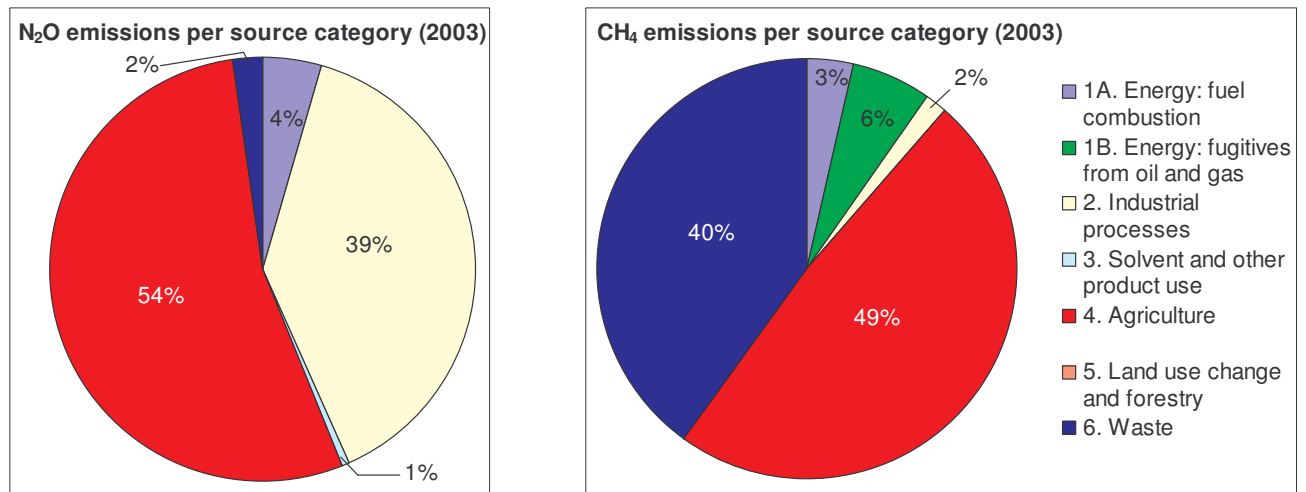
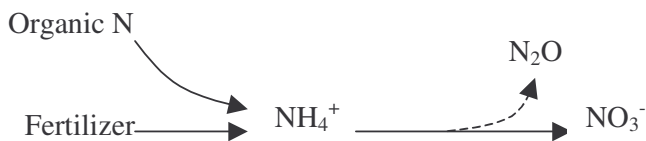


Figure 4 Emissions of N₂O and CH₄ in the Netherlands (2003) per source category. Source: Klein Goldewijk *et al.* (2005).



1.3 N₂O and CH₄ emission/consumption processes in agricultural soils

Nitrification and denitrification (figure 5) are generally accepted as the main mechanisms responsible for the production of N₂O in agricultural soils (Sahrawat and Keeney, 1986; Davidson, 1991; Skiba *et al.*, 1993; Mosier *et al.*, 1998). Nitrification refers to the biological oxidation of soil ammonium (NH₄⁺) to soil nitrite (NO₂⁻) and nitrate (NO₃⁻) under aerobic conditions, producing N₂O as a by-product:



When oxygen supply is limited, some bacteria use NO_3^- instead, thereby releasing N_2 . This process is referred to as (biological) denitrification. As for nitrification, N_2O may also be released as a by-product during this process:

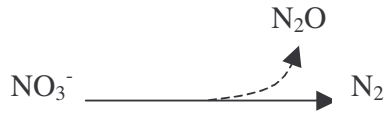
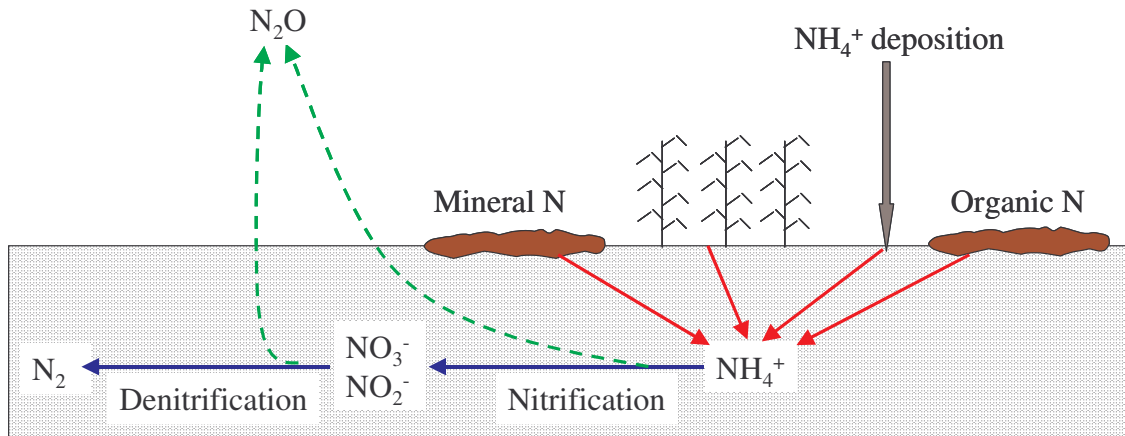
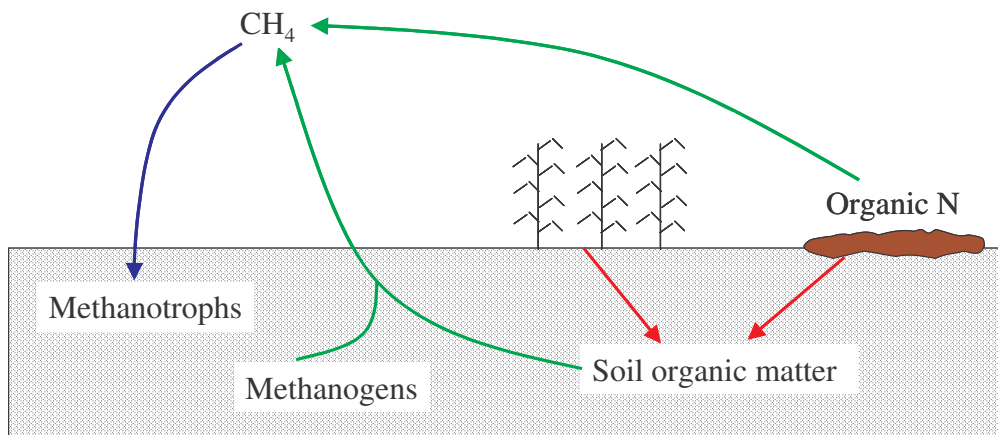


Figure 5 Schematic representation of the N_2O cycle in agricultural soils



CH_4 is produced in soils when organic matter is decomposed under anaerobic conditions, in the absence of electron acceptors other than CO_2 (NO_3^- , Mn^{4+} , Fe^{3+} , SO_4^{2-}). Normally, when oxygen supply is adequate, most of the C in decomposing organic matter converts to CO_2 . But, in the absence of oxygen, decomposition is incomplete and C is released as CH_4 instead. Once produced, CH_4 can be transported to the atmosphere via diffusion, ebullition, and via the vascular system of plants. However, under aerobic conditions both CH_4 that has been produced in anaerobic parts of the soil and atmospheric CH_4 can be oxidized, resulting in soils “absorbing” CH_4 (Crutzen, 1981; Steudler *et al.*, 1989; Yavitt *et al.*, 1990; Mosier *et al.*, 1991; Castro *et al.*, 1992; Nesbit and Breitenbeck, 1992; Adamsen and King, 1993; Lessard *et al.*, 1994; Prahter *et al.*, 1995; Ambus and Christensen, 1995; Mosier *et al.*, 1997a,b; Priemé and Christensen, 1997). Figure 6 summarizes the different processes involving CH_4 production, transport and consumption in soils.

Figure 6 Schematic representation of the CH_4 cycle in agricultural soils



Both N_2O and CH_4 are produced (or consumed) in agricultural soils as a result of microbial processes, but the size of the fluxes between the soil and the atmosphere strongly depends on different factors affecting the growth of microorganisms, such as soil oxygen content (soil water content), soil temperature, mineral N content/organic

matter and pH. Soil management practices (land use, nutrient application via manure and N-fertiliser, incorporation of either crops or crop residues, tillage, reduction of soil compaction), through their effect on these factors, can indirectly influence the fluxes of N_2O and CH_4 from soils.

1.4 Scope of this report

In 2004, a project was started within the program “Reduction of Non- CO_2 Greenhouse Gases”, with the objective of studying the potential of using reduction of soil compaction (precise soil management) as a mitigation strategy to reduce the emissions of nitrous oxide (N_2O) and methane (CH_4) from agricultural soils in the Netherlands. As part of this project, the existing literature was first reviewed to determine the main (soil) parameters controlling the emission of N_2O and CH_4 from soils, and quantify their effect (Mosquera, 2005). Secondly, N_2O and CH_4 fluxes were measured from different arable fields during a 2-year period, particularly during the growing season and after (heavy) rainfall events (Mosquera *et al.*, 2005a). Three different levels of soil compaction were studied: 1) compaction due to traditional soil management; 2) precise soil management, by using the riding track system to reduce soil compaction; 3) heavy compaction, by increasing tractor traffic. An extra experiment was performed at a grassland soil to investigate the feasibility of using the riding track system to reduce N_2O and CH_4 emissions from grassland (Mosquera *et al.*, 2005b). Finally, core samples were taken from the (arable) soils (different levels of compaction) and incubated in the laboratory under different fertilisation and soil water content levels, to study the effect of compaction, fertilisation and soil oxygen content on the emission of N_2O and CH_4 from soils (Rappoldt *et al.*, 2006). In this report, the main results of the whole project are summarised. Chapter 2 gives an overview of the effects of soil compaction, fertilisation, drainage/irrigation, and land use change, on the fluxes of N_2O and CH_4 from agricultural soils. Chapters 3 and 4 present the main results of the field experiments performed at, respectively, arable and grassland soils in the Netherlands, whereas chapter 5 summarises the main findings of the laboratory incubation measurements. In chapter 6, the results of this study are used to estimate the potential emission reduction that could be achieved in the Netherlands by applying precise soil management into arable soils. Finally, the main conclusions of this study are presented in chapter 7.

2 Factors controlling N₂O and CH₄ fluxes from soils: literature review

The production and consumption of both N₂O and CH₄ from soils occurs as a result of different microbial processes, which in turn are controlled by factors that influence the growth of microorganisms (soil oxygen content, soil temperature, mineral N content/organic matter and pH). Soil management practices (land use, nutrient application via manure and N-fertiliser, incorporation of either crops or crop residues, tillage, reduction of soil compaction), through their effect on these factors, can indirectly influence these fluxes. This chapter summarises the existing knowledge on the effects of soil compaction, fertilisation, drainage/irrigation and land use change on the fluxes of N₂O and CH₄ from soils.

2.1 Soil compaction

Soil compaction due to tractor traffic or animals is considered to be an environmental problem, due to its potential to reduce the ability of soils to consume atmospheric CH₄ and to increase the emission rate of N₂O. Soil compaction reduces air permeability and gas diffusion (Ball *et al.*, 1997a,b; Ball *et al.*, 1999a) and decreases the proportion of coarse pores (O'Sullivan and Ball, 1993; Breland and Hansen, 1996). This, in turn, potentially increases the abundance of anaerobic microsites, which may favour the emissions of both CH₄ and N₂O (via denitrification).

Soil compaction has been reported to reduce the ability of soils to consume atmospheric CH₄ by 60% on average (table 2, range: 30-90%; based on results reported in Hansen *et al.* (1993), Sitaula *et al.* (2000a), Flessa *et al.* (2002a), Yamulki and Jarvis (2002) and Teepe *et al.* (2004)). The effect of soil compaction on CH₄ fluxes is such that, in some cases, net CH₄ sinks are transformed into net emission sources (Ruser *et al.*, 1998; Teepe *et al.*, 2004). From the reduced number of studies presented here (appendix A), no significant influence of soil texture on the effect of soil compaction on CH₄ uptake rates was found (table 3).

Table 2 Effect of soil compaction on CH₄ fluxes from soils (land use)

Land use	Locations	CH ₄ fluxes
		Compacted/Uncompacted (Average [range])
Arable	18	0.5 [0.2 : 0.7] ⁽¹⁾
Grassland	1	4.4 ⁽²⁾
Forest	3	0.2 [0.1 : 0.3] ⁽¹⁾
TOTAL	22	0.4 [0.1 : 0.7] ⁽¹⁾

⁽¹⁾ Ratio based on CH₄ consumption rates

⁽²⁾ Ratio based on CH₄ emission rates

Table 3 Effect of soil compaction on CH₄ fluxes from grassland and arable soils (soil texture)

Soil texture	Locations	Relative CH ₄ fluxes
		Compacted/Uncompacted (Average [range])
Clay	1	4.4 ⁽¹⁾
Silt	2	0.4 [0.3 : 0.4] ⁽²⁾
Sand	16	0.5 [0.2 : 0.7] ⁽²⁾

⁽¹⁾ Ratio based on CH₄ emission rates

⁽²⁾ Ratio based on CH₄ consumption rates

A large number of literature studies (Douglas and Crawford, 1993; Hansen *et al.*, 1993; McTaggart and Smith, 1996; Oenema *et al.*, 1997; Ruser *et al.*, 1998; Smith *et al.*, 1998a; Ball *et al.*, 1999a, 1999b, 2000; Sitaula *et al.*, 2000b; Yamulki and Jarvis, 2002; Flessa *et al.*, 2002a; Thomas *et al.*, 2004; Teepe *et al.*, 2004) have already reported higher N₂O emissions after soil compaction. In general, light soil compaction has been shown to reduce N₂O emissions by 20% (table 4; see also appendix A), whereas heavy compaction resulted in increased N₂O emissions (on average, by a factor of 2). When soil is loosened after heavy compaction, the effect of compaction is reduced, and increased N₂O emissions, by 20% on average, are measured (table 4). The effect of soil compaction on N₂O emissions is generally higher in clay soils, and lower in sandy soils (table 5).

Table 4 Effect of soil compaction on N₂O fluxes from soils as a function of land use

Land use	Treatment	Locations	Relative N ₂ O emission	
			Compacted/Uncompacted	(Average [range])
Arable	Light compaction	9	0.8	[0.5 : 1.0]
	Heavy compaction	21	1.5	[0.8 : 2.9]
	Heavy compaction + loosening to 10 cm	10	1.2	[0.5 : 1.7]
Grassland	Light compaction	—	—	—
	Heavy compaction	1	3.5	—
	Heavy compaction + loosening to 10 cm	—	—	—
Forest	Light compaction	—	—	—
	Heavy compaction	3	8.0	[1.7 : 20.0]
	Heavy compaction + loosening to 10 cm	—	—	—
TOTAL	Light compaction	9	0.8	[0.5 : 1.0]
	Heavy compaction	25	2.3	[0.8 : 20.0]
	Heavy compaction + loosening to 10 cm	10	1.2	[0.5 : 1.7]

Table 5 Effect of soil compaction on N₂O fluxes from soils as a function of soil type

Soil type	Treatment	Locations	Relative N ₂ O emission	
			Compacted/Uncompacted	(Average [range])
Clay	Light compaction	—	—	—
	Heavy compaction	1	3.5	—
	Heavy compaction + loosening to 10 cm	—	—	—
Silt	Light compaction	—	—	—
	Heavy compaction	2	1.5	[1.3 : 1.7]
	Heavy compaction + loosening to 10 cm	—	—	—
Sand	Light compaction	10	1.2	[0.8 : 2.3]
	Heavy compaction	6	1.3	[0.9 : 1.7]
	Heavy compaction + loosening to 10 cm	6	0.9	[0.7 : 1.0]

Soil compaction has also been observed to negatively influence crop growth (Soane *et al.*, 1982; Perdok and Lamers, 1985; Graham *et al.*, 1986; Lamers *et al.*, 1986; Campbell *et al.*, 1986; Håkansson *et al.*, 1988; Dickson and Ritchie, 1990, 1996; Chamen *et al.*, 1990, 1992; Dickson and Campbell, 1990; Dickson *et al.*, 1992; O'Sullivan, 1992; Vermeulen and Klooster, 1992; Douglas *et al.*, 1992; Hansen, 1996). Based on the results reported in these studies, soil compaction (conventional traffic vs. zero traffic) leads to an average 10% reduction in crop yield, although yields reductions of as much as 34% have also been observed (Hansen, 1996). In order to maintain the same crop yield, either larger amounts of fertiliser have to be applied (Soane and Ouwerkerk, 1995; Dickson and Ritchie, 1996) or larger areas have to be cropped. These two situations are also favourable for larger N₂O and CH₄ emissions.

2.2 Fertilization

The reported effects of fertilization on CH₄ emission are complex and sometimes contradictory, and they usually depend on the type and amount of applied fertilizers (see appendix A). Inhibition of CH₄ uptake rates by various forms of N has been reported both in field measurements in forest (Stuedler *et al.*, 1989; Adamsen and King, 1993; Sitaula *et al.*, 1995a; MacDonald *et al.*, 1997), grassland (Mosier *et al.*, 1991; Willison *et al.*, 1995a, b; Mosier *et al.*, 1996) and arable (Mosier *et al.*, 1991; Hansen *et al.*, 1993; Sitaula *et al.*, 2000a) ecosystems, and in laboratory studies (Nesbit and Breitenbeck, 1992; Bosse *et al.*, 1993; Crill *et al.*, 1994; Hütsch *et al.*, 1994; King and Schnell, 1994; Willison *et al.*, 1995a, b; Hütsch, 1996; Priémé and Christensen, 1997; Powlson *et al.*, 1997). However, some examples can also be found of studies where no significant effect or even a small increase in CH₄ uptake after application of N-fertiliser was reported (Whalen *et al.*, 1991; Hütsch *et al.*, 1993; Goulding *et al.*, 1995; Cochran *et al.*, 1995; Dobbie and Smith, 1996; Gullledge *et al.*, 1997; Mosier and Delgado, 1997; Mosier *et al.*, 1997b; Van den Pol-Van Dasselaar, 1997, 1998, 1999c; Flessa *et al.*, 1998; Smith *et al.*, 2000; Glatzel and Stahr, 2001; Flessa *et al.*, 2002b).

Based on the selected literature (see appendix A), with studies comparing different types of fertilizer, it can be concluded that application of N fertiliser usually results in a reduction of CH₄ uptake rates both for grassland (15% on average) and arable (40% on average) soils (table 6). In general, higher reductions are obtained after application of cattle slurry or ammonium nitrate than after application of urea. Application of ammonium sulphate resulted in contradictory effects, ranging from a 30% reduction to a 50% increase in CH₄ sink strength of soils.

Table 6 Effect of fertiliser type on CH₄ fluxes from soils

Land use	Fertilizer type	Locations	Relative CH ₄ uptake Fertilized/Unfertilized (Average [range])
Arable	Ammonium nitrate	4	0.6 [0.6 : 0.7]
	Cattle slurry	8	0.6 [0.4 : 0.9]
Grassland	Ammonium nitrate	3	0.7 [0.6 : 1.0]
	Ammonium sulphate	6	1.1 [0.7 : 1.5]
	Cattle slurry	1	0.7
	Urea	3	0.9 [0.7 : 1.1]
TOTAL	Ammonium nitrate	7	0.7 [0.6 : 1.0]
	Ammonium sulphate	6	1.1 [0.7 : 1.5]
	Cattle slurry	9	0.6 [0.4 : 0.9]
	Urea	3	0.9 [0.7 : 1.1]

Several studies (Mosier *et al.*, 1991, 1997b; Sitaula and Bakken, 1993; Skiba *et al.*, 1994; Sitaula *et al.*, 1995b, 2000b; Clayton *et al.*, 1997; Mosier and Delgado, 1997; MacDonald *et al.*, 1997; Anger *et al.*, 2003) have reported higher N₂O emissions after the application of N fertiliser into soils. Fertiliser application can have an immediate effect on N₂O emissions (Sitaula *et al.*, 1995b; Yamulki *et al.*, 1995; Velthof *et al.*, 1996, 1997; Jamber *et al.*, 1997; Freney, 1997; Yoh *et al.*, 1997; Yamulki and Jarvis, 2002; Dobbie and Smith, 2003a), but increased emissions 1-4 weeks after fertiliser application have also been observed (Christensen, 1983; Brumme and Beese, 1992; Hansen *et al.*, 1993; Skiba *et al.*, 1996; Clayton *et al.*, 1997; Jørgensen *et al.*, 1997; Freney, 1997; Yoh *et al.*, 1997; Mogge *et al.*, 1999; Goossens *et al.*, 2001; Anger *et al.*, 2003).

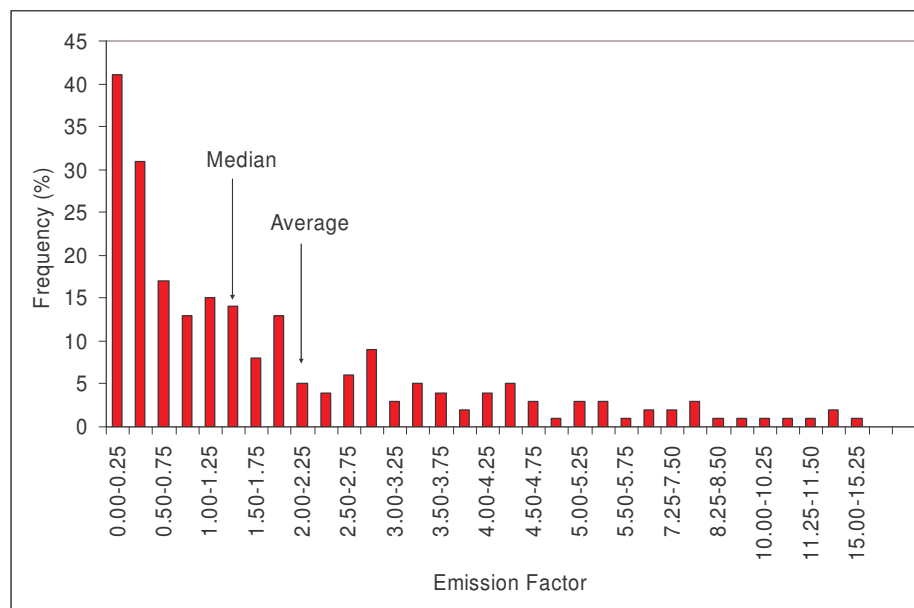
From the studies where data was available (see appendix A for a complete overview of the studies used in this analysis) it can be concluded that, on average, N₂O emissions are enhanced by a factor of 5 after applying N fertiliser into the soil (table 7), although increased emissions by as high as a factor 80 have also been measured (Clayton *et al.*, 1997).

Table 7 Effect of fertiliser type on N₂O fluxes from soils and emission factors

Land use	Fertiliser type	Locations	Relative N ₂ O emission Fertilised/Unfertilised	Emission factor
Arable	Ammonium nitrate	2	6.8 [5.2 : 8.4]	2.3 [0.7 : 3.9]
	Ammonium nitrate urea	24	1.2 [0.6 : 1.6]	2.7 [0.7 : 8.6]
	Ammonium sulphate	1	5.4	0.8
	Calcium ammonium nitrate	4	1.2 [1.1 : 1.4]	0.3 [0.1 : 0.5]
	Cattle slurry	2	4.8 [4.0 : 5.7]	2.6 [1.9 : 3.2]
	Potassium nitrate	1	4.3	0.6
	Urea	3	2.8 [2.0 : 4.3]	0.5 [0.4 : 0.6]
	Grassland	Ammonium nitrate	7	9.4 [1.1 : 41.0]
Ammonium sulphate		8	5.6 [1.9 : 19.0]	1.3 [0.2 : 3.6]
Calcium ammonium nitrate		5	2.4 [1.0 : 4.5]	0.5 [0.3 : 0.8]
Cattle slurry		2	13.5 [2.0-25.0]	1.0 [0.2 : 1.8]
Urea		5	22.1 [1.7 : 82.0]	0.6 [0.2 : 1.5]
TOTAL	Ammonium nitrate	11	8.0 [1.1 : 41.0]	2.9 [0.4 : 8.2]
	Ammonium nitrate urea	24	1.2 [0.6 : 1.6]	2.7 [0.7 : 8.6]
	Ammonium sulphate	9	5.6 [1.9 : 19.0]	1.2 [0.2 : 3.6]
	Calcium ammonium nitrate	9	1.9 [1.0 : 4.5]	0.4 [0.1 : 0.8]
	Cattle slurry	4	9.2 [2.0 : 25.0]	1.8 [0.2 : 3.2]
	Potassium nitrate	1	4.3	0.6
	Urea	8	14.8 [1.7 : 82.0]	0.6 [0.2 : 1.5]

The emission factors (EF: amount of N₂O-N emitted expressed as a fraction or a percentage of the N applied) reported in the literature (Bremner and Blackmer, 1978; Galbally, 1985; Eichner, 1990; Vermoesen *et al.*, 1996; Clayton *et al.*, 1997; Jørgensen *et al.*, 1997; Hénault *et al.*, 1998a, 1998b; Kaiser *et al.*, 1998a, 1998b; Mackenzie *et al.*, 1998; Dobbie *et al.*, 1999; Mogge *et al.*, 1999; De Klein *et al.*, 2001; Goossens *et al.*, 2001; Flessa *et al.*, 2002b; Hou and Tsuruta, 2003; Dobbie and Smith, 2003a; Koga *et al.*, 2004) range from values as low as 0.1%, to values as high as 15% of N applied (table 7 and figure 7). By using all the available data (see also appendix A), an average emission factor of $2.1 \pm 2.6\%$ has been obtained. When only long-term measurements (> 1 year) are considered, the estimated average emissions factor is $2.4 \pm 2.5\%$. This is almost a factor 2 higher than the relationship found by Bouwman in 1996 ($1.25 \pm 1\%$ of the N applied). The N₂O-emission factor is usually taken to be independent of crop type and the chemical form of N used. However, table 7 shows that N₂O emissions can be greatly affected by the type of fertiliser applied.

Figure 7 Frequency distribution of N₂O emission factors



2.3 Drainage and irrigation

By controlling the soil oxygen content, both drainage and irrigation have been considered to be important management factors affecting the emission rate of N₂O and CH₄ from soils. Drainage affects the ground water level, which roughly indicates the transition between anaerobic (CH₄ production) and aerobic (CH₄ consumption) layers in the soil. If the ground water table drops, the aerobic top layer of the soil becomes thicker and conditions become less favourable for CH₄ production and more favourable for CH₄ consumption (Barlett and Harriss, 1993; Moore and Roulet, 1993; Bubier *et al.*, 1995; Van den Pol-Van Dasselaar *et al.*, 1997, 1998, 1999a,b,c; Flessa *et al.*, 1998; Smith *et al.*, 2000). Irrigation and precipitation may also be important as they influence the soil moisture content, which also determines the proportion of anaerobic/aerobic sites in the soil (Mosier *et al.*, 1991; Keller *et al.*, 1993). CH₄ consumption rates usually show a negative relationship with soil moisture, often expressed in terms of water-filled pore size (WFPS). This effect has been observed in laboratory studies (Nesbit and Breitenbeck, 1992; Priemé *et al.*, 1997), and in the field at forest (Castro *et al.*, 1992, 1995; Lessard *et al.*, 1994; Sitaula *et al.*, 1995a; Dobbie and Smith, 1996), grassland (Mosier and Delgado, 1997; Mosier *et al.*, 1997b; Wang *et al.*, 2005) and arable ecosystems (Koga *et al.*, 2004). However, MacDonald *et al.* (1997), Priemé and Christensen (1997) and Flessa *et al.* (2002a) could not find any significant correlation between CH₄ fluxes and soil water content in their experiments.

The importance of irrigation/drainage on N₂O emissions has been widely reported in the literature (Goodroad and Keeney, 1984; Linn and Doran, 1984; Davidson, 1991; Mosier *et al.*, 1991; Sitaula and Bakken, 1993; Yamulki *et al.*, 1995; MacKenzie *et al.*, 1997; Clayton *et al.*, 1997; Mosier and Delgado, 1997; Jørgensen *et al.*, 1997; Mogge *et al.*, 1998; Flessa *et al.*, 1998; Kaiser *et al.*, 1998a; Kamp *et al.*, 1998; Hénault *et al.*, 1998b; Smith *et al.*, 1998a; Dobbie *et al.*, 1999; Williams *et al.*, 1999; Sijojoki and Jaakkola, 2000; Ruser *et al.*, 2001; Dobbie and Smith, 2001, 2003a, 2003b; Sehy *et al.*, 2003; Regina *et al.*, 2004; Syväsalö *et al.*, 2004; Koga *et al.*,

2004; Thomas *et al.*, 2004; Wang *et al.*, 2005). In contrast, no significant relationship between N₂O emissions and soil moisture content or rainfall was found in a Velthof *et al.* (1996), MacDonald *et al.* (1997), Kaiser *et al.* (1998b), Mahmood *et al.* (1998), Mogge *et al.* (1999), Kusa *et al.* (2002) and Yamulki and Jarvis (2002). High N₂O emissions usually occur only when the water-filled pore space (WFPS) is about 60% and soil N is not limiting. Very large (WFPS>90%) or low (WFPS<40%) values usually result in low N₂O emissions.

2.4 Land use

Several authors (Keller *et al.*, 1990, 1993; Mosier *et al.*, 1991; Dobbie and Smith, 1994, 1996; Hütsch *et al.*, 1994; Willison *et al.*, 1995a, b; Dobbie *et al.*, 1996; Hütsch, 1996, 1998; Flessa *et al.*, 1998; Chan and Parkin, 2001) have already reported the reduction of the potential of soils to consume CH₄ after the conversion of native grasslands and forest to agricultural soil (managed pastures, cultivated crops). Reductions in CH₄ uptake rates can be as high as 50-85% (Mosier *et al.*, 1991; Ojima *et al.*, 1993; Dobbie *et al.*, 1996; Powlson *et al.*, 1997; Smith *et al.*, 2000), and persist for months (Willison *et al.*, 1995b), years (Mosier *et al.*, 1991; Hütsch *et al.*, 1994; Priemé *et al.*, 1997) or even decades (Ojima *et al.*, 1993) after the primary cause of inhibition has ceased.

Table 8 summarises the results found in the literature from a large number of studies (see appendix A) focusing on the effect of land use on CH₄ uptake rate. CH₄ uptake rate at forest sites is on average a factor 3-4 higher than at native grasslands, whereas arable soils show only about 10% of the CH₄ sink of forests. When fertilised, grasslands are, on average, converted to net sources of CH₄.

Table 8 Effect of land use on CH₄ fluxes from soils

Land use	Locations	CH ₄ fluxes (mg CH ₄ m ⁻² day ⁻¹)
Forest	24	-1.8 [-5.4 : -0.3]
Native grassland	21	-0.5 [-1.4 : 0.1]
Arable (unfertilised)	4	-0.2 [-0.3 : -0.1]
Arable (fertilised)	14	-0.2 [-0.8 : -0.1]
Grassland (fertilised)	21	0.3 [-0.7 : 7.8]

N₂O emissions from agricultural soils are usually found to be greater and more variable than those from uncultivated land or natural ecosystems (Luizao *et al.*, 1989; Keller *et al.*, 1993; Vermoesen *et al.*, 1996; Velthof *et al.*, 1996; Skiba *et al.*, 1996, 1998; Smith *et al.*, 1998a; Mahmood *et al.*, 1998; Kaiser *et al.*, 1998a,b; Kamp *et al.*, 1998; Dobbie *et al.*, 1999; Mogge *et al.*, 1999; Ruser *et al.*, 2001; Dobbie and Smith, 2001; Goossens *et al.*, 2001; Kim and Kim, 2002; Grant *et al.*, 2004; Regina *et al.*, 2004). However, Mosier *et al.* (1991) measured emissions from wheat and grassland fields that were 58 and 78% of the emission from a fallow site. Flessa *et al.* (1998) found no significant effect of land use on N₂O emissions when measuring during 1 year N₂O emissions on 4 cultivated peat soils (2 meadows, 1 field with rye grass, 1 field with maize) in Germany. And Syväsalo *et al.* (2004) found no statistical differences between the annual fluxes from grass, barley and fallow.

Table 9 summarizes the results reported in all available studies (see also appendix A). In general, fertilised grasslands emitted 2-3 more N₂O than fertilised arable fields. However, when referring to emission factors (N₂O emission as % of N applied), differences in emissions from grassland and arable fields are not significant. Fertilised grasslands emitted, on average, a factor of 5 more N₂O than unfertilised arable fields. Natural grasslands emitted 8-9 times less N₂O than fertilised grasslands, whereas the lowest emission was found by forest, emitting approximately 10 times less N₂O than fertilised grasslands.

Table 9 Effect of land use on N₂O fluxes from soils and emission factors

Cultivation	Locations	N ₂ O fluxes (mg N ₂ O m ⁻² day ⁻¹)	N ₂ O emission factor (% of N applied)
Arable (unfertilised)	25	0.5 [0.0 : 1.3]	—
Cabbage	1	0.3 [0.3 : 0.3]	—
Oilseed rape	8	0.3 [0.0 : 0.9]	—
Onion	3	0.4 [0.1 : 0.7]	—
Potato	1	0.7 [0.7 : 0.7]	—
Sugar beet	3	0.6 [0.4 : 0.7]	—
Winter barley	5	0.5 [0.3 : 0.8]	—
Winter wheat	4	0.8 [0.3 : 1.3]	—
Arable (fertilised)	105	1.1 [0.0 : 5.9]	2.4 +/- 2.9 [0.1 : 15.2]
Cabbage	4	0.6 [0.2 : 0.8]	0.5 +/- 0.1 [0.4 : 0.6]
Corn	4	0.6 [0.4 : 1.0]	1.5 +/- 0.6 [0.9 : 2.1]
Maize	11	1.4 [0.1 : 2.9]	2.3 +/- 1.9 [0.2 : 5.4]
Oilseed rape	19	0.9 [0.1 : 3.9]	1.3 +/- 1.0 [0.1 : 3.3]
Onion	9	3.2 [0.4 : 5.9]	3.2 +/- 3.0 [1.2 : 10.3]
Potato	11	1.0 [0.0 : 1.9]	2.7 +/- 3.3 [0.2 : 11.5]
Soybean	4	1.6 [0.2 : 4.5]	1.6 +/- 1.7 [0.2 : 3.5]
Spring barley	8	0.7 [0.2 : 1.7]	4.4 +/- 5.9 [0.1 : 15.2]
Sugar beet	8	0.6 [0.1 : 1.0]	3.1 +/- 2.7 [0.2 : 8.6]
Tobacco	2	2.4 [1.2 : 3.6]	2.3 +/- 0.4 [2.0 : 2.6]
Winter barley	11	0.5 [0.2 : 1.0]	1.6 +/- 1.2 [0.1 : 4.3]
Winter wheat	14	0.7 [0.1 : 1.9]	1.9 +/- 1.4 [0.1 : 4.6]
Grassland (unfertilised)	26	0.3 [0.0 : 0.8]	—
Grassland (fertilised)	76	2.6 [0.0 : 30.0]	2.2 +/- 2.7 [0.1 : 12.0]
Forest	28	0.2 [-0.3 : 1.1]	—

2.5 Conclusions

In this chapter, different soil management factors affecting the fluxes of N₂O and CH₄ from soils were reviewed, including fertilisation, drainage/irrigation, compaction and land use. Conversion of natural ecosystems (native grasslands, forest) to cultivated land (managed grasslands, arable land) has been observed to result in higher N₂O emissions and lower CH₄ uptake capacity of soils. On average, CH₄ uptake rate from forest is a factor 3-4 higher than from native grassland, whereas CH₄ consumption rate from arable land is only 10% of the one from forest. Managed grasslands are, on average, a net CH₄ source. For N₂O, higher emissions (a factor 2 on average) are observed from managed grasslands when compared to (fertilised) arable land, although both show a similar emission factor (N₂O emissions as % of N applied). Managed grasslands emit on average 5 times more N₂O than unfertilised arable land, whereas N₂O emission from native grasslands (forest) is a factor 8 (13) lower than from managed grassland. Changes in soil physical properties (including water availability, gas diffusivity, oxygen supply and soil structure) and soil fertility (particularly N input) are suggested to greatly contribute to this effect.

Fertilisation increases soil N and organic matter contents, and generally results in enhanced N₂O emissions (by a factor 5 on average), and reduced CH₄ consumption rates (by 25% on average), although some studies did not find any significant effect. Both a short-term effect (immediate effect of after a few weeks after fertilisation) and a long-term effect (soils that are left unplanted for some time may still emit significant amounts of N₂O or show significant inhibition levels for CH₄ uptake) have been observed. Based on the existing literature, a new relationship was found between N₂O emissions and the amount of N applied as fertiliser (emission factor, EF=2.4±2.5%), which is a factor 2 higher than the relationship reported in Bouwman (1996). The form of fertiliser applied is also an important factor affecting the fluxes of N₂O and CH₄. In general, higher N₂O emissions (as a percentage of N applied) and higher reductions in CH₄ uptake have been measured from ammonium nitrate and cattle slurry than from urea or ammonium sulphate.

Drainage and irrigation influence the ground water level and soil water contents, which in turn affect gas diffusivity and oxygen supply. High N₂O emissions have been observed to occur when the water-filled pore space (WFPS) is about 60% and soil N is not limiting. Very large (WFPS>90%) or low (WFPS<40%) values usually resulted in low N₂O emissions. CH₄ consumption usually shows a negative relationship with WFPS and ground water level. As for

N₂O, this relationship is only expected to occur when other factors (such as organic matter content) are not limiting.

Soil compaction decreases air permeability and gas diffusion, which in turn affect the production and consumption rates of N₂O and CH₄ from soils. On average, N₂O emissions were reduced by 20% after light compaction and enhanced by a factor 2 after heavy compaction. When heavy compacted soils were loosened to a depth of 10 cm, N₂O emissions were 20% higher than in the uncompacted soils. In general, soils with clay (sand) texture showed the highest (lowest) N₂O emissions. For CH₄, heavy compaction reduced CH₄ uptake capacity of soil by 60% on average, and this effect was not significantly influenced by soil texture. When soil compaction was avoided, higher crop yields (10% on average) or reductions in fertilizer application (by 15-30%) maintaining a similar crop yield have been measured.

From these results it can be concluded that precise soil management, aimed to decrease heavy compaction of the soil, could be used as a control or mitigation tool to reduce the emissions of CH₄ and N₂O from agricultural soils.

3 Effect of soil compaction on N₂O and CH₄ fluxes from arable land: Field measurements

In this chapter, field measurements of N₂O and CH₄ fluxes at different agricultural (arable) soils in the Netherlands are reported. First, the measurement location is described according to soil type, management and cultivation. Next, a description is given of the experimental set-up and measurement equipment. Finally, the main results and conclusions are illustrated.

3.1 Materials and methods

3.1.1 Site characteristics and field management

The experimental site was situated in the southwest of the Netherlands (West Brabant), and is managed by a cooperative of farmers practicing organic farming (BEKO bv). The soil is classified as marine clay, and has a sandy clay to light clay soil texture. Measurements were performed at three experimental fields with variable crop rotation. Main soil characteristics and field management treatments are summarized in table 10.

Table 10 Soil characteristics and management treatments (arable). n.a.: not available.

	Field 1		Field 2	Field 3
Crop (year)	Carrot (2004)	Spinach (2005)	Seed onion (2004)	Onion sets (2005)
Soil characteristics				
pH-KCl	7.2	7.2	7.6	7.5
CaCO ₃ (%)	5.6	5.6	5.9	8.5
Organic matter (%)	3.7	3.7	4.5	3.9
Mineral N (60-90 cm; kg N ha ⁻¹)	185.8	185.8	92.0	n.a.
Growing period				
Planting	11/06/2004	09/05/2005	18/05/2004	26/03/2005
Harvesting	11/10/2004	22/06/2005	02/09/2004	15/07/2005
Fertilisation				
Day of application	—	27/04/2005	19/04/2004	28/04/2005
Fertiliser type	—	Cattle slurry + vinasse	Cattle slurry	Cattle slurry + vinasse
Fertiliser rate (kg N ha ⁻¹)	—	182.8 (57.4 + 125.4)	78	124.4 (52.2 + 72.2)
Measurement period	14/07-17/08	28/04-22/06	12/07-17/08	21/04-15/07

Three different compaction treatments were considered:

- Compaction due to traditional soil management (TR). Soil traffic is arbitrary, which results in old and new tracks lying on different places.
- Precise soil management (RT, Riding Track system), by using a tractor equipped with an RTK-DGPS system (Geotec). Old and new tracks are superposed (± 5 cm), limiting compaction to traffic lines.
- Heavy compaction (HC) by increasing tractor traffic.

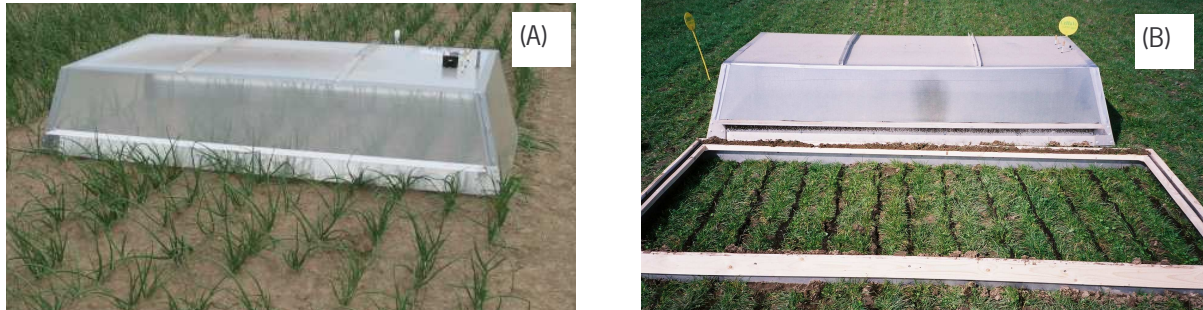
At all measurement fields, 4 plots were applied for each of the traditional and riding track treatments, whereas for the heavy compaction treatment one plot was used. This results in a number of 9 plots per measured field. In addition, an extra heavy compaction plot (unfertilised) was added in 2005 at the field cultivated with spinach.

3.1.2 Measurement methods

Gas exchange between the soil surface and the atmosphere was measured using closed flux chambers (3.5 m² surface area, 1.5 m³ volume) that were either placed on top of the soil (figure 8a) or on permanently installed wooden frames (inserted 5-10 cm into the soil; figure 8b). Every chamber was equipped with a small axial flow fan and an external 12-V battery to allow for good mixing of all gases in the chamber. In order to account for possible leakages, a known amount of a tracer gas (SF₆) was injected into the chamber and the decay in concentration of the tracer gas with time monitored. The rate of decay method (Mosquera *et al.*, 2002) was

applied to obtain an estimate of the leakage over the measured period. Gas samples were collected in 30 ml syringes 0, 10, and 20 min (0, 20 and 40 min in 2005) after the start of the measurements, which was considered to be short enough to minimise the effect of the chamber on the production and consumption rates (Scott *et al.*, 1999). The samples were analysed the same day *in situ* by using a gas chromatograph equipped with an electron capture detector (ECD) for N₂O and SF₆, and a flame ionisation detector (FID) for CH₄.

Figure 8 Flux chamber on top of the soil (A) and on permanently installed frames (B)



Soil structure was characterised by measuring the soil water content in the field with the ECH₂O Dielectric Aquameter Sensor (Decagon Devices, Inc.). The sensor was introduced into the soil to a depth of approximately 10 cm, in order to measure soil water content at the upper 10-cm soil layer. At every measurement day and for every flux chamber, 1-4 measurements were performed with this sensor.

A paired one-tailed t-test was applied to study the significance of the differences measured between the applied treatments (traditional, riding track, heavy compaction). This test assesses whether the means of two groups are statistically different from each other by comparing the mean of the daily differences of the groups (\bar{x}_d) in relation to the variation in the data (σ_d , standard deviation of the mean difference):

$$t = \frac{\bar{x}_d}{\sigma_d} \cdot \sqrt{n}$$

Where n indicates the number of measurements performed (measurement days). If the calculated “t-value” exceeds the tabulated value for a particular significance level (Weiss, 2000), the treatments are considered to be significantly different (at that particular significance level). In this study, a significance level of 95% ($p \leq 0.05$) was selected.

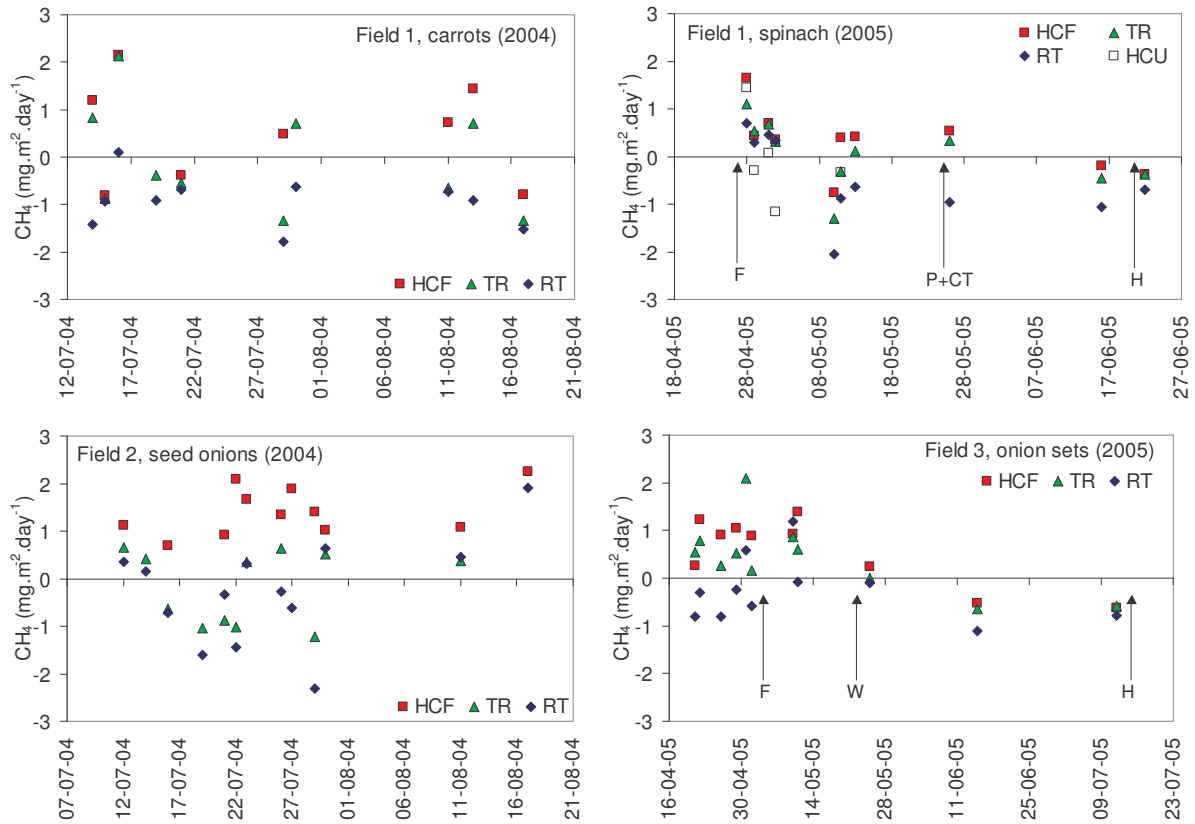
3.2 Results

3.2.1 Methane (CH₄)

CH₄ fluxes at all arable sites varied between -3 and 3 mg.m².day⁻¹ (figure 9) and showed a large within-site variation. The average coefficient of variation for the spatial variation ranged between 30 and 100%, although values as high as 600% were found for individual measurements. The spatial variation could not be explained by differences in WFPS.

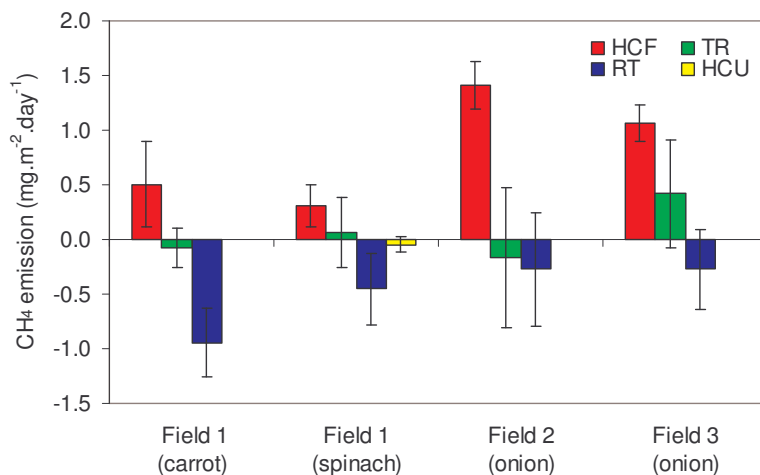
The effect of manure application on CH₄ fluxes was not consistent between different sites. Fertilisation did not significantly affect CH₄ emissions at field site 3, cultivated with onions sets in 2005. At field 1, cultivated with spinach in 2005, fertiliser application increased CH₄ emissions by a factor 2-3 with respect to the control plots, dependent on the degree of compaction of the soil.

Figure 9 Individual CH₄ flux measurements at all fields. HCF: heavy compaction fertilised; HCU: heavy compaction unfertilised; RT: riding track; TR: traditional; F: manure application; CT: soil compaction treatments; P: planting; W: weed; H: harvesting.



The degree of compaction clearly affected the CH₄ fluxes at all sites (figure 10). Heavy compaction increased CH₄ emissions at the arable soils cultivated with spinach (field 1) and onion (field 3) by a factor 2-5 with respect to the control plots. The effect of heavy compaction on CH₄ fluxes at the other two arable sites (carrot, field 1; seed onions, field 2) was such that a net CH₄ sink was transformed into a net emission source. The riding track treatment resulted in an increase in CH₄ uptake by a factor 2-12 at the arable soils cultivated with seed onion (field 2) and carrot (field 1), compared to the control plots. At the other two arable sites, a net CH₄ source was transformed into a net CH₄ sink. A statistical analysis showed that differences between different treatments were significant at the 95% significance level for all arable sites.

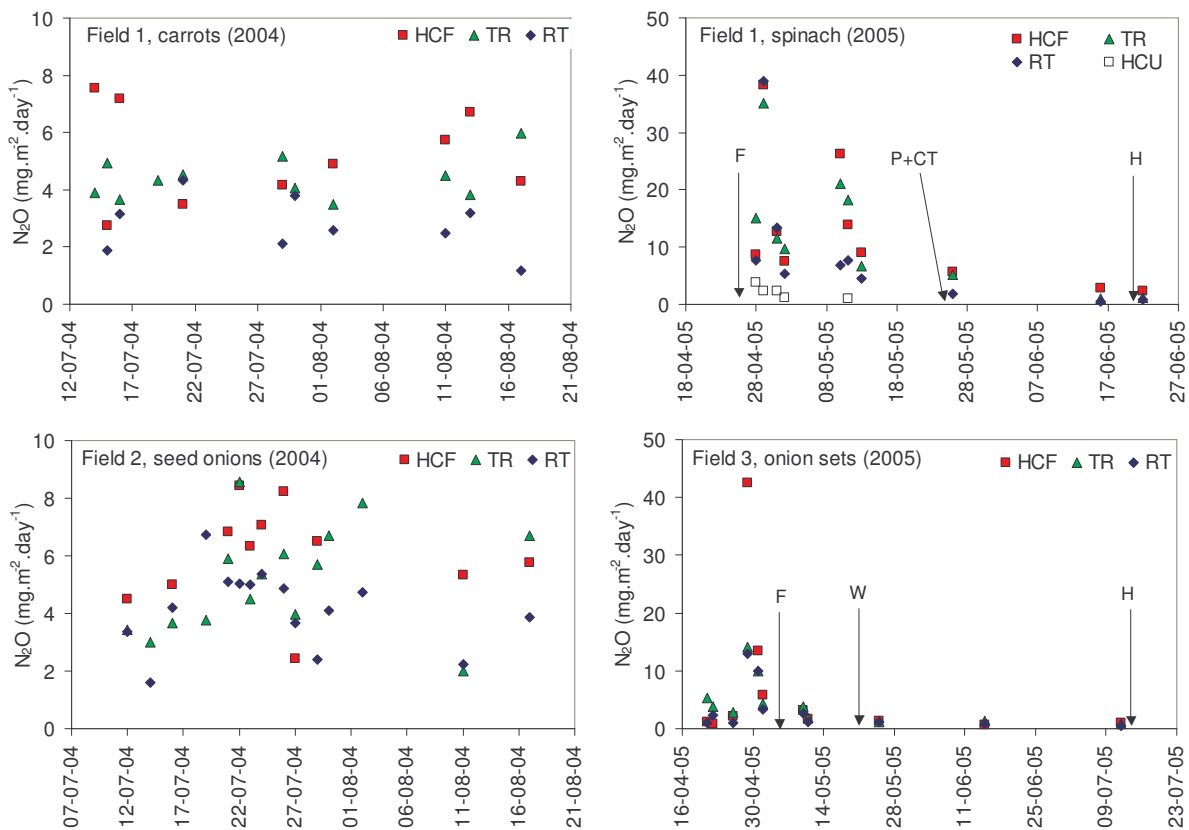
Figure 10 CH₄ fluxes as a function of soil compaction for different crops. HCF: heavy compaction fertilised; RT: Riding track; TR: traditional system; HCU: heavy compaction unfertilised.



3.2.2 Nitrous oxide (N_2O)

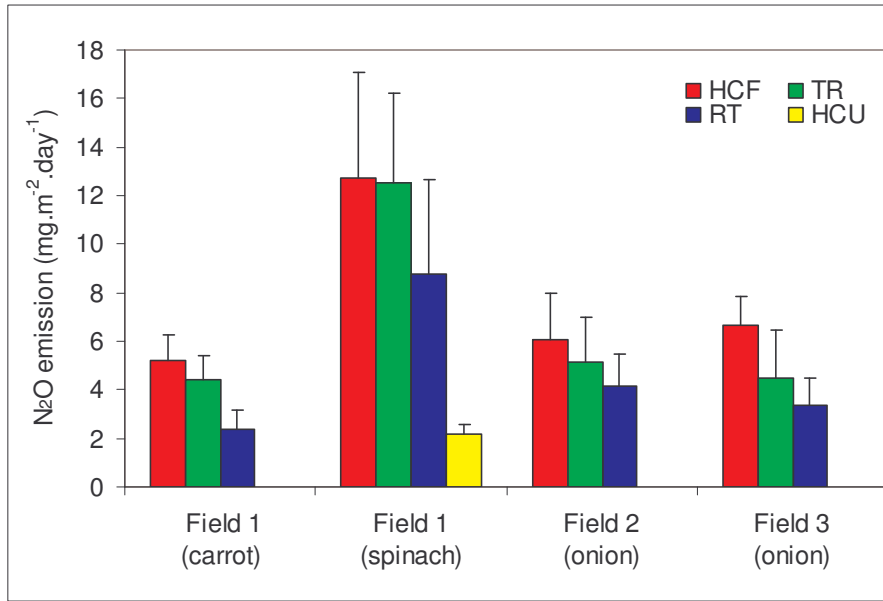
All sites were net sources for N_2O , with values ranging from 0 to 50 $mg.m^{-2}.day^{-1}$ (figure 11). The average coefficient of variation varied between 25 and 35%, with maximum values of up to 80% for individual measurements. Higher N_2O emissions were measured after manure application at all sites (figure 11). This effect was observed one day after fertilisation at the field cultivated with onion sets in 2005 (field 3), and two days after fertiliser was applied at the site cultivated in 2005 with spinach (field 1). Emissions decayed rapidly and lasted for no more than a couple of days. At the spinach site, where a plot was kept unfertilised, the effect of fertilisation could be quantified: N_2O emissions were enhanced by a factor 6 at the fertilised plot with respect to the control (unfertilised).

Figure 11 Individual N_2O flux measurements at all fields. HCF: heavy compaction fertilised; HCU: heavy compaction unfertilised; RT: riding track; TR: traditional; F: manure application; CT: soil compaction treatments; P: planting; W: weed; H: harvesting.



Soil compaction markedly influenced N_2O emissions from all sites (figure 12). Heavy compaction resulted in significantly higher N_2O emissions (by 20-50%) than the traditional treatment at three of the four arable sites. At the field cultivated with spinach in 2005, heavy compaction plots showed similar emissions as the traditional treatment. An statistical analysis showed that differences between the heavy compaction and the traditional systems were only significant (at the 95% significance level) at field 2 (cultivated with seed onions in 2004). The application of the riding track treatment always resulted in a decrease of N_2O emissions by 20-50%. The differences between the emissions measured at the riding track plots and the traditional treatments were significant at the 95% significance level for all sites. Differences in WFPS between treatments had no significant effect on the soil emissions of N_2O .

Figure 12 N₂O emission as a function of soil compaction for different crops. HCF: heavy compaction fertilised; RT: Riding track; TR: traditional system; HCU: heavy compaction unfertilised.



3.3 Conclusions

Soil compaction had a markedly effect on both N₂O and CH₄ fluxes. Heavy compaction increased N₂O emissions by 20-50% and resulted in a factor 2-5 higher CH₄ emissions than the traditional system. The effect on CH₄ was such that some plots that were acting as a sink were transformed into net CH₄ sources. The riding track system resulted in a reduction of N₂O emissions by 20-50%, and reduced CH₄ emissions by a factor 2-12. In two of the sites, the effect was such that the site was transformed from a net CH₄ source into a net sink. Soil water content (WFPS) did not significantly influence the fluxes of N₂O and CH₄. Fertilisation resulted in higher N₂O emissions (by a factor 6), whereas its effect on CH₄ ranged from no significant effect to higher emissions (conversion of a small sink into a net CH₄ source). These results are comparable with those presented in chapter 2, and suggest the possibility of using precise soil management (for example with the riding track system) to control and reduce N₂O and CH₄ emissions from agricultural soils.

4 Effect of soil compaction on N₂O and CH₄ fluxes from grassland soils: Field measurements

In this chapter, results of a preliminary field study performed to investigate the effect of precise soil management on N₂O and CH₄ fluxes from grassland soils are reported. First, the measurement location is described according to soil type, management and cultivation. Next, a description is given of the experimental set-up and measurement equipment. Finally, the main results and conclusions are illustrated.

4.1 Materials and methods

4.1.1 Site characteristics and field management

Measurements were performed at a grassland field (grass clover), where no grazing or fertilisation events occurred in the last few years. Three plots were prepared for this experiment according to the following management treatments (see chapter 4 for more details):

1. Heavy compaction, unfertilised (HCU).
2. Heavy compaction, fertilised (HCF).
3. Riding track system, fertilised (RTF).

Fertilisation occurred manually, by applying a known amount of cattle slurry into (manually) prepared slots in the soil. There were no replicates for the selected management treatments, although the experiment was repeated three times, in order to compare the measured results under different conditions. Table 11 summarises the main characteristics of the different experiments. During the first two experiments, the same plots were used for the measurements, whereas for the third experiment a new plot was prepared for each of the selected treatments.

Table 11 Field management for all three experiments

	Experiment 1	Experiment 2	Experiment 3
Fertilisation			
Day of application	23-03-2005	14-06-2005	27-06-2005
Fertiliser type	Cattle slurry	Cattle slurry	Cattle slurry
NH ₄ -N (g kg ⁻¹)	2.32	1.08	1.08
Total N (g kg ⁻¹)	4.13	2.95	2.95
Application rate (m ³ ha ⁻¹)	17	18	18
Application rate (kg N ha ⁻¹)	68.8	53.1	53.1
Measurement period			
Start measurements	23-03-2005	14-06-2005	27-06-2005
End measurements	17-05-2005	05-07-2005	05-07-2005
Measurement days	11	7	5

4.1.2 Measurement methods

Gas exchange between the soil surface and the atmosphere was measured using closed flux chambers (figure 13a) as described in chapter 4. The measurement period was always 40 minutes, which was considered to be short enough to minimise the effect of the chamber on the production/consumption rates (Scott *et al.*, 1999). Gas samples were collected in 30 ml syringes 0, 10, and 20 min (0, 20 and 40 min in 2005) after the start of the measurements. The gas samples were analysed the same day *in situ* by using a gas chromatograph equipped with an electron capture detector (ECD) for N₂O and SF₆, and a flame ionisation detector (FID) for CH₄.

Soil structure was characterised by measuring the soil water content in the field with the ECH₂O Dielectric Aquameter Sensor (Decagon Devices, Inc.; Figure 13b). The sensor was introduced into the soil to a depth of approximately 10 cm, in order to measure soil water content at the upper 10-cm soil layer. At every measurement day and for every flux chamber, 1-4 measurements were performed with this sensor.

A paired one-tailed t-test was applied to study the significance of the differences measured between the applied treatments (riding track vs. heavy compaction; fertilised vs. unfertilised), as described in chapter 4.

Figure 13 Measurement methods. (a) ECH₂O Dielectric Aquameter Sensor (volumetric water content); (b) Flux chamber and permanent installed wooden frames (CH₄ and N₂O fluxes)

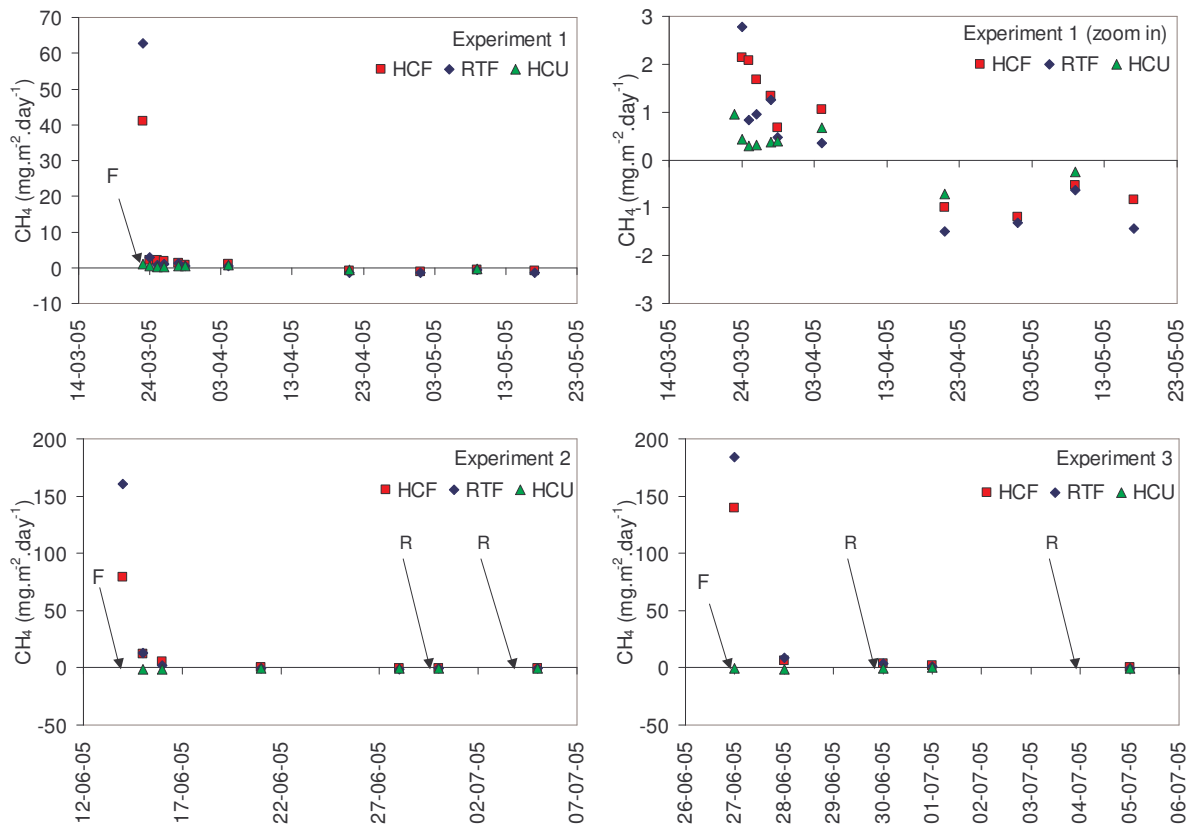


4.2 Results

4.2.1 Methane (CH₄)

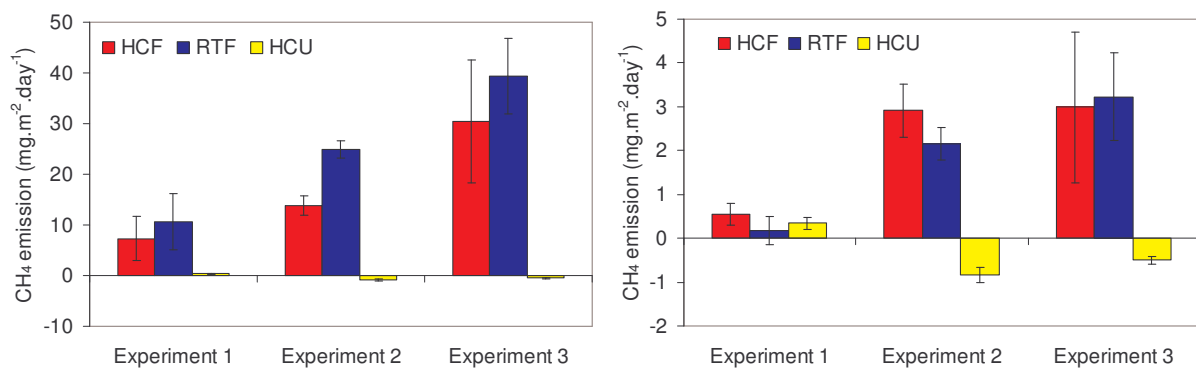
Manure application had a marked effect on the CH₄ fluxes observed at the measurement site for all three experiments (figure 14 and figure 15). In experiment 1, the heavy compacted plot that was fertilised (HCF) emitted, on average, 20 times more CH₄ than the unfertilised plot (HCU). In experiments 2 and 3 the effect was even larger: the HCU plot was, on average, a net sink for CH₄, whereas the HCF plot was a net CH₄ source. Rainfall and/or WFPS did not have any significant effect on the observed CH₄ fluxes for any of the compaction/fertilisation treatments.

Figure 14 Individual CH₄ flux measurements at all fields. HCF: heavy compaction fertilised; HCU: heavy compaction unfertilised; RTF: riding track fertilised; F: manure application; R: rainfall.



It is unclear whether the degree of compaction had a significant effect on the CH₄ fluxes observed at the measurement site. The large CH₄ emission peak occurring just after fertilisation in all experiments seems to override any potential effect of soil compaction. There are a number of factors that could explain this observed effect. First of all, both the preparation of the slots in the soil and fertilisation occurred manually, which could result in a distribution of the amount of manure deposited in the soil different for all different plots. Secondly, we did not apply nitrogen fertiliser but cattle slurry, and if the composition of the slurry was not homogeneous, the available organic matter for decomposition could have also varied between plots. Finally, there were no replicates for any of the plots, which could have reduced the effect of these two factors. Figure 15 shows that, when all data is being considered, the average CH₄ emission from the RTF plot is higher than from the HCF plot, although only in experiment 2 the differences between both treatments were significant ($p=0.05$). In contrast, when the analysis is performed on data starting the day after fertilisation, the HCF plot emitted (on average) more CH₄ than the RTF plot in experiments 1 and 2, whereas in experiment 3 more CH₄ was emitted from the RTF plot.

Figure 15 CH₄ fluxes as a function of soil compaction for different crops. HCF: heavy compaction fertilised; HCU: heavy compaction unfertilised; RTF: Riding track fertilised. Left: all data used. Right: data starts 1 day after manure application.



4.2.2 Nitrous oxide (N₂O)

All plots were net sources of N₂O, with values ranging between 0 and 7 mg.m⁻².day⁻¹ (figure 16). Fertilisation resulted in higher N₂O emissions (between 70% and a factor 2.2 on average; figure 16) from the fertilised plot (HCF) compared to the control (HCU). An initial N₂O emission peak (a factor 6 higher than the control plot) was only observed during the first day after fertilisation in experiment 1, whereas in experiments 2 and 3 no emission peak was observed after fertilisation, although the emissions were constantly higher from the fertilised plot. The effect of rainfall on the observed N₂O emissions was significant: after the two rainfall events a new emission peak was measured.

The effect of soil compaction on N₂O emissions is shown in figure 17. In contrast with the results presented for CH₄, the initial N₂O emission peak after fertilisation had no significant effect on the total (average) N₂O emission. Heavy compaction (HCF) resulted in significantly ($p=0.05$) higher N₂O emissions (by 30-45%) than the riding track system (RTF) in experiments 2 and 3. In experiment 1, emissions from the HCF and the RTF plot were not significant ($p=0.05$), although emissions from the HCF plot were, on average, 15% higher than from the RTF plot.

4.3 Conclusions

It is unclear whether soil compaction had an important role on the observed CH₄ fluxes. Soil water content did not significantly influence the fluxes of N₂O and CH₄, although higher N₂O emissions were observed after rainfall events. Fertiliser application, which resulted in large emission peaks from the fertilised plots (in contrast with the control (unfertilised) plots, which in most cases were even a sink of CH₄), seems to be the main factor controlling CH₄ emissions during the first day after fertilisation. When this initial CH₄ peak is not considered, the CH₄ emission from the heavy compacted plots was found to be higher than from the riding track system in two of the three experiments, and lower in the other one. Soil compaction did have a significant effect on N₂O emissions from the grassland soil: the emissions from the heavy compacted soils were 15-45% higher than from the riding track

system. In order to get more conclusive results, new measurements are needed that should be based on a larger number of replicates per treatment and/or more measurement locations.

Figure 16 Individual N₂O flux measurements at all fields. HCF: heavy compaction fertilised; HCU: heavy compaction unfertilised; RTF: riding track fertilised; F: fertiliser application; R: rainfall.

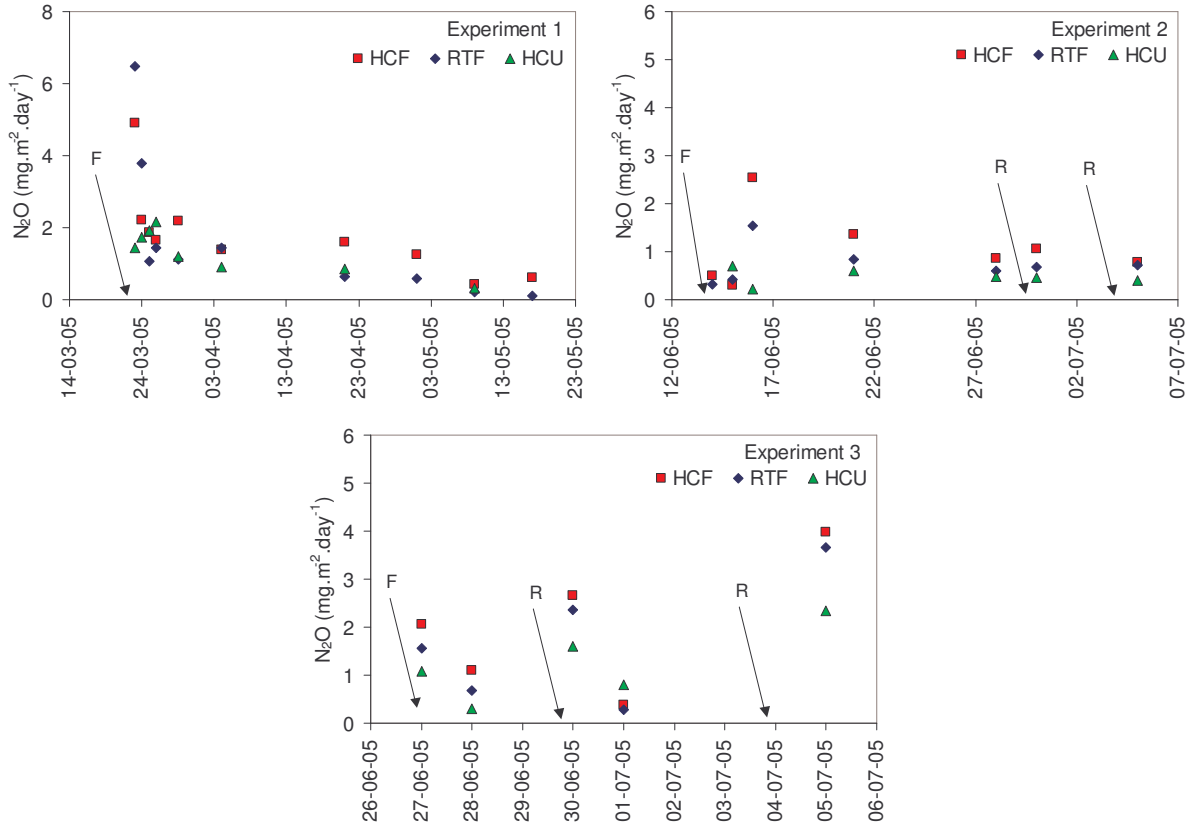
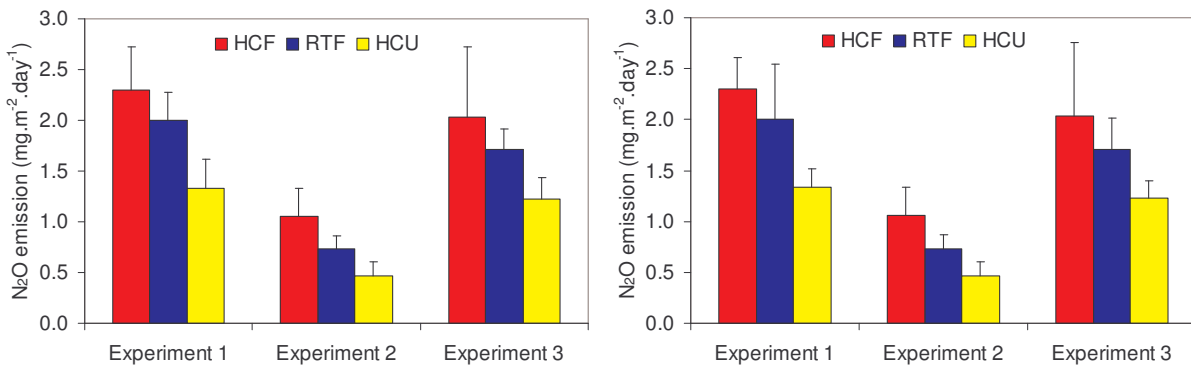


Figure 17 N₂O emission as a function of soil compaction for different crops. HCF: heavy compaction fertilised; HCU: heavy compaction unfertilised; RTF: Riding track fertilised. Left: all data used. Right: data starts 1 day after manure application.



5 Laboratory experiments

In this chapter, results of laboratory experiments performed to obtain more fundamental insight into the effects of soil compaction on the emission of greenhouse gases are reported. First the laboratory set up is described. Next the results are presented and a description is provided that shows that the emission of N₂O is accurately described by a combination of two parameters, viz. soil respiration and gas filled pore space.

5.1 Materials and methods

Soil samples were obtained from an arable field located on a light clay soil in Langeweg (Brabant) in the south west of the Netherlands. On an arable field three different compaction treatments were considered: (i) Precise soil management (riding track system), by using a tractor equipped with an RTK-DGPS system. Old and new tracks are superposed (± 5 cm), limiting compaction due to traffic lines; (ii) Compaction due to traditional soil management (arbitrary traffic) is simulated by means of additional pressure applied to the beds in between the permanent tracks; (iii) Extra compaction by heavy tractor traffic.

On 27 May 2005 soil cores (100 cc; height 51 mm, diameter 50 mm) were obtained from the above field from each of the three treatments. The samples were taken close to each other and always at two different depths: 3–8 cm and 12–17 cm. The porosity was 0.428 ± 0.019 for samples from the riding track system, 0.419 ± 0.009 for the samples from the traditional treatment, and 0.390 ± 0.006 for the samples from the heavy compacted soil.

Nitrate was added to the samples in a quantity resulting in a gift of 50 kg ha⁻¹ (in a layer of 5 cm). In subsequent days the emission of greenhouse gases from the samples was measured. Three samples of the same type (soil layer, compaction, water content) were placed in a container. The measurement encompassed that the container (volume 894 cm³) was closed, and that after 30 minutes accumulated N₂O and CH₄ was measured with two photo-acoustic spectroscopic infra-red gas analyzers (Velthof and Oenema 1995). The first analyzer was used to measure CO₂, the second analyzer, which was equipped with a CO₂ filter, was used to measure N₂O and CH₄.

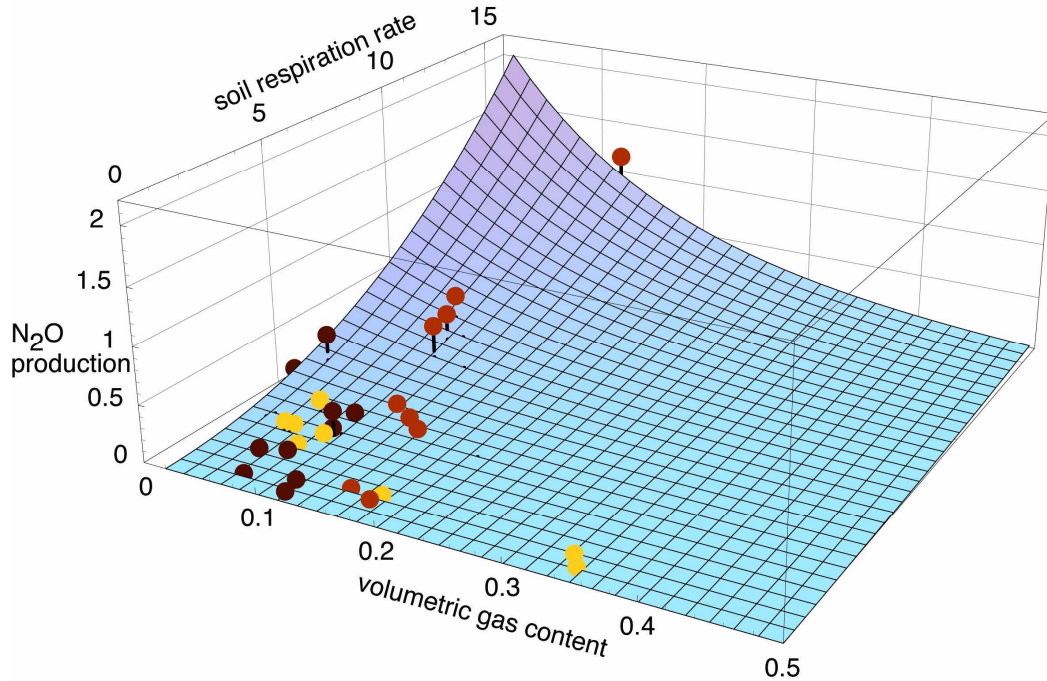
The measurements were carried out in a total of 72 containers, each containing three soil cores. At two depths (3–8 cm and 12–17 cm) and three compactions (Riding track, traditional compaction and heavy compaction) this implies 12 containers per type. The water content in those 12 containers differed by natural variation and by adding water at the start of the experiment. Over the course of the experiment the water contents were kept constant by weighing the containers each day and subsequently compensating for evaporation losses by a water gift of a few milliliters.

Due to the scale of the measurements (5 cm depth) the emissions are expressed per unit volume and per unit of time. The emission is calculated based on a measured increase in the concentration per unit of time, which is determined relative to the atmospheric background concentration. The sensitivity for small emissions is determined by the variability of the background measurements. For CO₂ the standard deviation in the background measurement was about 5%. Accounting for a closing time of 30 minutes, the volume of the container, and the molecular weight of the compound to be measured this implies a smallest detectable CO₂ production of 0.5 g C m⁻³ day⁻¹. For N₂O the variability was about 10%, which implies a detection limit of 0.002 g N m⁻³ day⁻¹ and for CH₄ this was 15% implying a detection limit of 0.03 g C m⁻³ day⁻¹.

5.2 Results and Discussion

Our analysis resulted in a correlation between N₂O emission, soil respiration and gas filled pore space (figure 18).

Figure 18 N₂O emission as a function of soil respiration and gas filled pore space. A fit of equation (1) with $a = 0.0074$ [0.0040, 0.0109], $b = 6.4$ [2.5, 10.3] and $c = 2.1$ [1.9, 2.3] explains 88% of the variation in the data points. The confidence intervals given are for 95%. The results of the samples from the various treatments are indicated with the following symbols: Riding track system (yellow), traditional (light brown) and heavy compacted (dark brown). The unit of respiration is $\text{g C m}^{-3} \text{ day}^{-1}$, N₂O production is in $\text{g N m}^{-3} \text{ day}^{-1}$, and the gas filled pore space is dimensionless.



The correlation between N₂O and gas filled pore space only was not significant (figure 19). The rationale behind this is that N₂O is a product of anaerobic microbial activity, which occurs at (small) anoxic spots in the soil. Anoxic conditions are likely to occur if (1) there is a large microbial activity in the soil as a whole (observed as a large soil respiration rate) and (2) the gas filled pore space is small which severely hampers the diffusive transport of oxygen through the soil. Hence, it is the combination of a large oxygen demand with a limited oxygen transport which leads N₂O production, *if there is nitrate available*. The following equation expresses the N₂O production $P_{\text{N}_2\text{O}}$ as the product of a term which decreases with the gas filled pore space ϵ and increases with the soil respiration P_{CO_2} :

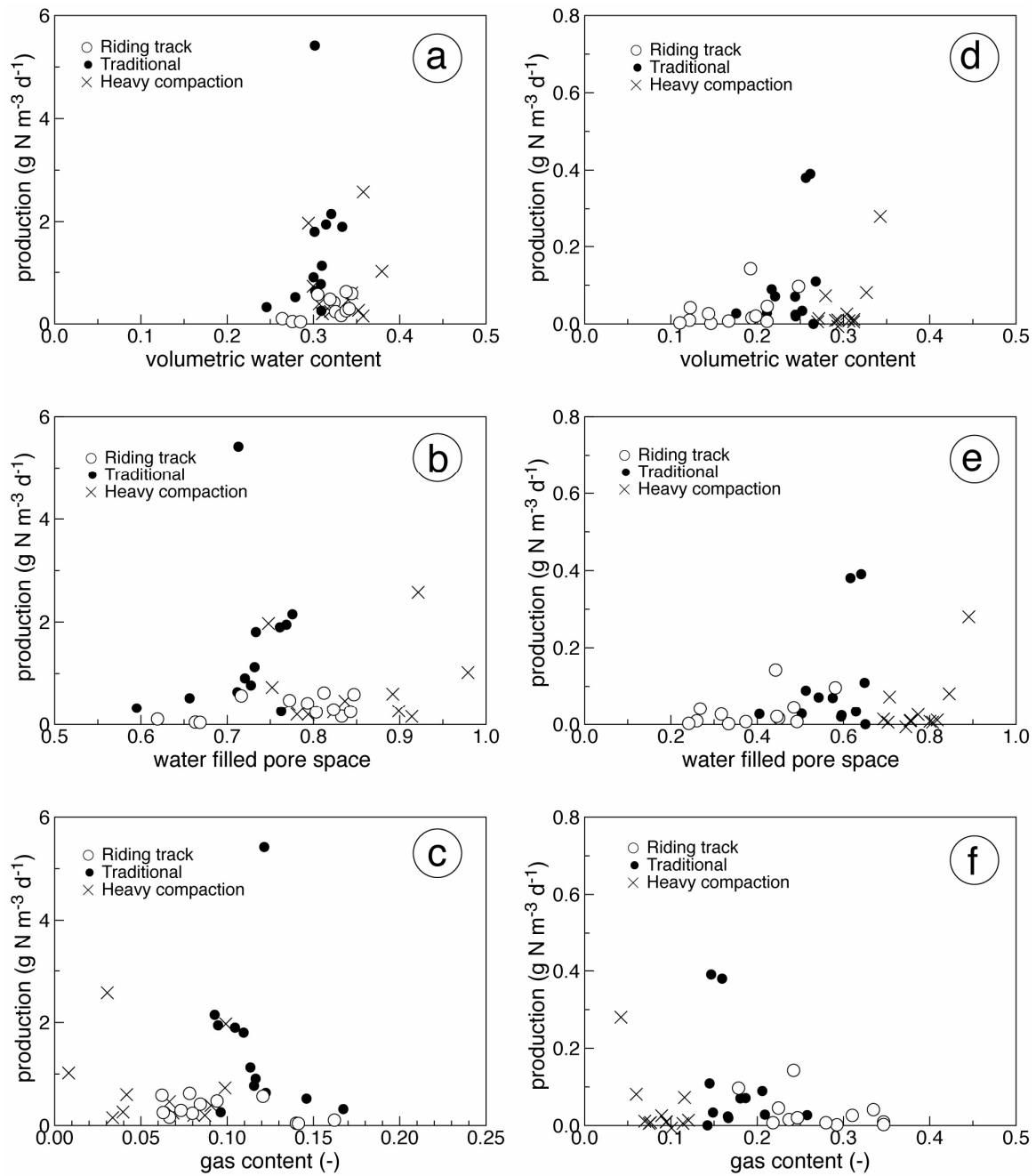
$$P_{\text{N}_2\text{O}} = a \exp(-b \cdot \epsilon) \cdot (P_{\text{CO}_2})^c \quad (\text{Equation 1})$$

where a depends on the nitrate content of the soil and b and c are regression parameters.

Fitting this equation to the data yielded a $r^2 = 0.88$, i.e. the fit explained 88% of the variation in the data. Equation (1) is particularly attractive since it allows an estimate of the effect of soil compaction on the N₂O production. If the main effect of compaction is a decrease of the gas filled pore space ϵ , this leads to a relative increase of the N₂O production of b times the change in ϵ . Our estimate of $b = 6.4$ would imply that a change in ϵ of 3% yields a change in N₂O production of 6.4 times 3 which is approximately 20%.

We further tested whether this assumption is applicable to field scale calculations and estimated N₂O production during a year with a process model (Fussim2, see Heinen 2001). This exercise yielded estimates of the daily N₂O production per ha for non-compacted sand and silt soils to which we could apply a compaction effect on a day by day basis, using the model described above. Simulated (and observed) soil gas contents are almost always larger than 3% which implies that the application of a compaction effect of that size does not lead to any inconsistencies and yields a 20% emission increase. This 20% is our first estimate of the effect of soil compaction on the emission of N₂O from agricultural arable soils. This estimate needs further validation and testing, e.g. the extent of soil compaction that we have set to a uniform 3% for all soils. Further research is needed to evaluate whether the factor b that we have estimated for equation 1 (6.4) is also valid for other soils than the clay soil we have tested.

Figure 19 N₂O production averaged over the first three days after supplementing soils cores with nitrate, as a function of volumetric water content (panels a and d), water filled pore space (panels b and e), and gas filled pore space (panels c and f). Panels a, b, and c are for the 12–17 cm layer, and panels d, e, and f are for the 3–8 cm layer.



6 Emission reduction through precise soil management in the Netherlands

In the previous chapter we have presented and parameterized an equation that allows an estimate of the effect of soil compaction in nitrous oxide (N_2O) production. In the present chapter we will use this calculation rule to evaluate the potential effect of the introduction of the riding track system in the Netherlands on the emission of N_2O from *arable* fields.

Table 12 shows the surface area of Dutch agriculture devoted to the cultivation of specific crops, specified to sandy and clay soils. Also given is the estimated N_2O emission for the specific crops. The estimated emissions are based on the amount of fertilizer and manure applied *conform default fertilizer advice*, and the emission factors for these N sources. Based on this scenario the current emission of N_2O from Dutch arable fields is estimated at 2061 ton N_2O -N per year.

The riding track system is applicable to both sandy and clay soils, but the potential advantages are bigger on clay than on sand, because clay soils tend to be wetter after rainfall. The riding track system makes it possible to work on the field sooner after a rainfall event and hence is more likely to be introduced first on clay soils (Bert Vermeulen, personal communication). We have evaluated a scenario with the following assumptions:

- the riding track system is introduced on 70% of the clay soils and on 10% of the sandy soils
- application of the riding track system reduces soil compaction and results in a 3% higher porosity in soils
- a higher porosity of 3% translates into a 20% reduction in the emission of N_2O

In this scenario N_2O emission from Dutch arable soils is reduced by 169 ton per year (Table 13). This estimate is strongly affected by and depends on the validity of the above assumptions. We feel that the estimate of a 3% increase in porosity due to the use of the riding track system is rather conservative. Reductions in pore space as a result of tractor traffic on a clay soil under barley from 51 to 37% have been reported (Miller and Donahue, 1995). This would imply an even higher potential emission reduction.

Furthermore it is important to stress that the application of the riding track system leads to a more efficient use of the N applied, and hence may result in reduced N gifts and hence in lower N_2O emissions. This potential effect is not included in the above scenario.

We conclude that the potential effect of the application of the riding track system on the emission of N_2O from Dutch arable fields can be substantial, and that an emission reduction of ~169 ton N_2O -N (~0.1 Mton CO_2 -equivalent) is realistic. On a national scale the highest gains can be achieved by introducing the system for the cultivation of maize, potatoes, grain and sugar beet, and by focusing on clay soils. For individual farmers the highest gains are to be achieved for crops that receive the highest gifts of fertilizer and manure.

A validation of the above through research directed at underpinning the above assumptions is required to sustain our conclusions. Such research would best be carried out with those crops where introduction of the riding track system promises the highest reductions in N_2O emission.

Table 12 Estimated N₂O production from Dutch agricultural fields^a

Crop	Area (ha)			N applied (kgN ha ⁻¹)				N ₂ O emission ton N ₂ O-N per year		
	Total	Sand	Clay	Sandy soils		Clay soils		Sand	Clay	Total
				Animal manure	Inorganic fertilizer	Animal manure	Inorganic fertilizer			
Silage maize	231500	162050	43985	170	15	170	25	575.3	160.5	735.8
Potatoes	179200	66304	96768	120	120	120	130	238.7	358.0	596.7
Grain	137000	31510	90420	100	40	100	55	75.6	230.6	306.2
Sugarbeet	114000	28500	75240	100	50	100	65	71.3	199.4	270.6
Barley	38000	8740	25080	100	40	100	55	21.0	64.0	84.9
Onions	15600	780	14820	0	120	0	130	0.9	19.3	20.2
Other vegetables	10000	1200	7500	100	0	100	10	2.4	15.8	18.2
Maize	7000	1610	4620	120	40	120	60	4.5	13.9	18.4
Rye	5000	1150	3300	100	5	100	15	2.4	7.1	9.5
Total	737300	301844	361733					992.0	1068.5	2060.5

^a Estimates are for those crops that contribute most to N₂O emission, based on Velthof and Kuikman (2000), Kuikman *et al.* in prep, and expert judgement on the amounts of fertilizer and animal manure applied, assuming an average N content of 4 kgN/m³ animal manure, and emission factors for fertilizer and animal manure of 10 and 20 gN₂O-N (kg N)⁻¹ respectively

Table 13 Estimated effect of the introduction of the riding track system on the emission of N₂O from Dutch agricultural fields^a

Crop	ton N ₂ O-N/year N ₂ O emission			
	Present	Riding track	Reduction	Reduction (%)
Silage maize	735.8	701.8	34.0	5
Potatoes	596.7	541.8	54.9	9
Grain	306.2	272.4	33.8	11
Sugarbeet	270.6	241.3	29.3	11
Barley	84.9	75.6	9.4	11
Onions	20.2	17.5	2.7	13
Other vegetables	18.2	15.9	2.3	12
Maize	18.4	16.3	2.0	11
Rye	9.5	8.4	1.0	11
Total	2060.5	1891.1	169.4	8

^a Estimates are based on Table 1 assuming (i) introduction of the riding track system on 10% of the agricultural fields on sand and on 70% of the fields on clay, and (ii) a 20% lower N₂O production due to the a higher soil porosity as a result of the application of the riding track system

7 Summary, main conclusions and recommendations

Agricultural soils are an important source of N₂O. Soil compaction is known to stimulate the emission of nitrous oxide (N₂O) and methane (CH₄) from agricultural soils. N₂O and CH₄ are potent greenhouse gases, with a global warming potential respectively 296 times and 23 times that of CO₂. Soil compaction in arable land is rather common. Over the last years management options to minimize agricultural greenhouse gas emissions have been evaluated, in particular for N₂O soil emissions. One such option would be to minimize soil compaction due to the use of heavy machinery. Soil compaction in arable land is relatively general. Here we report on the emissions of N₂O and CH₄ from an arable system where soil compaction is minimized through application of the so – called riding track (*rijpaden*) system. The selected arable field was located on a light clay soil in the south west of the Netherlands.

First of all, a literature study was performed to review the effect of compaction and other management factors (fertilization, water management, land use) on the emissions of N₂O and CH₄ from agricultural soils. The results of this study indicated a reduced CH₄ uptake capacity of heavy compacted soils (by 60% on average) compared to least compacted soils. N₂O emissions were, on average, reduced by 20% after reducing compaction and enhanced by a factor 2 after heavy compaction. In general, soils with clay and sand texture showed the highest and lowest N₂O emissions, respectively. These results have been corroborated in both field measurements and laboratory experiments.

In the field, three management methods on soil compaction were applied and compared: (i) a conventional approach in which soil traffic is arbitrary (the effect is that compaction is evenly distributed over the plots); (ii) a heavy compaction approach in which extra heavy equipment was used; and (iii) a precision management approach in which tractors were equipped with a global positioning system (accuracy = ±5 cm) and always were driven over the same track (the effect is that soils are compacted in the tractor tracks only). The emissions of N₂O and CH₄ were measured during a period of two years in the field and in soil cores (laboratory experiments) collected from the measured plots. During the laboratory experiments, the carbon dioxide (CO₂) production was also measured.

Measurements in the field showed a pronounced and clear effect of soil compaction on both N₂O and CH₄ fluxes. On arable soils, heavy compaction increased N₂O emissions by 20-50% and resulted in 2-5 times higher CH₄ emissions than the traditional (less compacted) system. The effect of compaction on CH₄ was such that some plots that were acting as a sink were transformed into net CH₄ sources after increasing compaction. The riding track system resulted in a reduction of N₂O emissions by 20-50%, and reduced CH₄ emissions by a factor 2-12. In two of the sites, the effect was such that the site was transformed from a net CH₄ source into a net sink after reducing compaction. Fertilisation resulted in higher N₂O emissions (by a factor 6), whereas its effect on CH₄ ranged from no significant effect to higher emissions (conversion of a small sink into a net CH₄ source).

On grassland soils, N₂O emissions from compacted soils were, on average, 15-45% higher than from the riding track system. For CH₄, the results were not conclusive. Fertiliser application, which resulted in large emission peaks from the fertilised plots (in comparison with the control (unfertilised) plots, which in most cases were even a sink of CH₄), seemed to be the main factor controlling CH₄ emissions during the first day after fertilisation. When this initial CH₄ peak was not considered, the CH₄ emission from the heavy compacted plots was found to be higher than from the riding track system in two of the three experiments and lower in the other one.

Laboratory experiments showed a correlation between N₂O emission and soil respiration and water or air filled pore space. The correlation between N₂O and air filled pore space alone was not significant. We could explain this by assuming that soil respiration is an indicator for microbial activity and is strongly correlation with consumption of oxygen, thus creating local anaerobic conditions. Including soil respiration, measured as CO₂ production (P_{CO2}), made it possible to describe N₂O emission (P_{N2O}) as a result of air filled pore space (ε) and compaction with a simple calculation rule: $P_{N2O} = a \exp(-b \cdot \epsilon) \cdot (P_{CO2})^c$ (correlation $r^2 = 0.88$). The attractiveness of this equation is that it allows the calculation of the sensitivity of N₂O production for changes in gas filled pore space, which is a good first estimate of the effect of compaction on porosity. Our estimate of $b = 6.4$ would imply that a reduction in soil porosity of 3% would result in an increase in N₂O by approximately 20%. We further tested whether this assumption is reasonable and estimated N₂O production during a year with a process model (FUSSIM). This exercise yielded estimates of 26 and 34 kg N₂O-N per ha for non-compacted sand and silt soils and a 20% higher emission for a soil with 3% more compaction.

Based on these results we conclude:

- Precise soil management that lowers the extent of soil compaction, for example by using the riding track system, will result in lower N₂O emissions and higher CH₄ uptake from soils. Field measurements showed 20-50% lower N₂O emissions and 60% higher CH₄ uptake from soils managed with the riding track system than from soils managed with traditional systems.
- On the basis of laboratory experiments, we developed and parameterized a simple and testable model that relates soil compaction and soil porosity to emission of N₂O. This model predicts an increase in N₂O production in soils by 20% when soil porosity is reduced by 3% (higher compaction).
- The riding track system is in principle applicable to cropping systems on both sand and clay soils, but the potential advantages are more substantial on clay than on sand. First of all, because it would increase the possibilities for soil management in spring and autumn (Vermeulen, personal communication). Secondly, because of the higher risk of compaction and emissions in clay soils than in sandy soils (Van der Akker, personal communication). As a result we conclude that it is likely that this system ('rijpaden') would firstly be promoted and introduced on clay soils. Application of the riding track system could lead to an emission reduction of ~169 ton N₂O-N (~0.1 Mton CO₂-equivalent) per year in the Netherlands.

The estimated potential emission reduction as a result of the introduction of the riding track system on Dutch agricultural fields of ~169 ton N₂O-N per year in the Netherlands is based on the following assumptions:

1. The riding track system is introduced in arable cropping systems on 70% of the clay soils and on 10% of the sandy soils.
2. The application of the riding track system prevents soil compaction and results in a 3% higher soil porosity as a result of less soil compaction.
3. This higher soil porosity results in an average 20% reduction of N₂O emissions compared to the current (traditional) soil management.

In order to validate whether these assumptions are appropriate further research is needed, both at the field (for better estimates of the emissions and the effect of other management factors) and in the laboratory (e.g. to evaluate whether the b factor is also valid for soils other than the soil type used in this study). This research should focus on those crops where introduction of the riding track system should lead to the highest reductions in N₂O emission. This is a function of fertilizer and manure input and of impact of management for specific cropping systems on avoided soil compaction.

Appendix A Factors affecting CH₄ and N₂O emission: literature review

Table A1 Summary of studies on the effect of land use on CH₄ and N₂O fluxes from soils

Reference	Country	Land use	Cultivation	Measurement days/year	Location s N ₂ O	Location s CH ₄
Anger <i>et al.</i> (2003)	Germany	Grassland	Grass	365	4	—
Ball <i>et al.</i> (1999a)	UK	Arable	Spring barley	90	1	—
			Winter barley	60-210	2	—
Ball <i>et al.</i> (1999b)	UK	Arable	Oilseed rape	90	2	—
			Spring barley	30-61	2	—
			Winter barley	61-210	2	—
Ball <i>et al.</i> (2000)	UK	Arable	Oilseed rape	365	1	—
			Winter barley	365	2	—
Chen <i>et al.</i> (1997)	China	Arable	Maize	273	1	—
			Soybean	273	1	—
Clayton <i>et al.</i> (1997)	UK	Grassland	Grass	365	12	—
Clemens <i>et al.</i> (1999)	Germany	Arable	Winter wheat	120	1	—
Dobbie and Smith (1996)	UK	Forest	Forest	365	—	1
Dobbie and Smith (2003a)	UK	Arable	Potato	365	1	—
			Winter barley	365	1	—
			Winter wheat	365	1	—
		Grassland	Grass	365	9	—
Dobbie <i>et al.</i> (1996)	UK	Forest	Forest	90-365	—	4
		Grassland	Grass	120	—	1
Flessa <i>et al.</i> (1998)	Germany	Arable	Maize	365	1	1
		Grassland	Grass	365	2	2
Flessa <i>et al.</i> (2002a)	Germany	Arable	Potato	120	2	—
Glatzel and Stahr (2001)	Germany	Grassland	Grass	365	2	2
Goldman <i>et al.</i> (1995)	USA	Forest	Forest	365	—	3
Goodroad and Keeney (1985)	USA	Arable	Tobacco	180	2	—
		Forest	Forest	180	1	—
		Grassland	Grass	180	1	—
Goossens <i>et al.</i> (2001)	Belgium	Arable	Maize	365	2	—
			Sugar beet	365	1	—
		Forest	Forest	270-365	2	—
		Grassland	Grass	210-365	5	—
Gulledge <i>et al.</i> (1997)	USA	Forest	Forest	365	—	2
Hénault <i>et al.</i> (1998a)	France	Arable	Oilseed rape	120	5	—
Hénault <i>et al.</i> (1998b)	France	Arable	Oilseed rape	120	9	—
Hou and Tsuruta (2003)	Japan	Arable	Cabbage	180	4	—
Jørgensen <i>et al.</i> (1997)	Denmark	Grassland	Grass	210	1	—
Kaiser <i>et al.</i> (1998a)	Germany	Arable	Oilseed rape	365	9	—
			Sugar beet	365	9	—
			Winter barley	365	9	—
			Winter wheat	365	9	—
Kaiser <i>et al.</i> (1998b)	Germany	Arable	Spring barley	365	3	—
		Grassland	Grass	365	6	—
Kamp <i>et al.</i> (1998)	Germany	Arable	Winter wheat	365	1	—
Kasimir-Klemedtsson and Klemedtsson (1997)	Sweden	Forest	Forest	365	—	1
Klemedtsson <i>et al.</i> (1997)	Sweden	Forest	Forest	365	1	—
Koga <i>et al.</i> (2004)	Japan	Arable	Cabbage	365	1	—
			Potato	365	1	—
			Sugar beet	365	1	—
			Winter wheat	365	1	—

Table A1 Summary of studies on the effect of land use on CH₄ and N₂O fluxes from soils (continued)

Reference	Country	Land use	Cultivation	Measurement days/year	Locations N ₂ O	Locations CH ₄
Kusa <i>et al.</i> (2002)	Japan	Arable	Onion	195	6	—
MacDonald <i>et al.</i> (1997)	UK	Forest	Forest	365	2	2
Mahmood <i>et al.</i> (1998)	Pakistan	Arable	Maize	60	1	—
			Winter wheat	150	1	—
Martikainen <i>et al.</i> (1993)	Finland	Forest	Forest	365	2	—
Mogge <i>et al.</i> (1998)	Germany	Forest	Forest	365	1	—
Mogge <i>et al.</i> (1999)	Germany	Arable	Maize	365	1	—
		Grassland	Grass	365	1	—
Mosier and Delgado (1997)	Puerto Rico	Grassland	Grass	365	6	6
Mosier <i>et al.</i> (1991)	USA	Grassland	Grass	180	7	7
Mosier <i>et al.</i> (1997b)	USA	Grassland	Grass	120-365	12	12
Pinto <i>et al.</i> (2002)	Brazil	Forest	Forest	365	1	—
Priemé and Christensen (1997)	Denmark	Forest	Forest	365	—	1
Ruser <i>et al.</i> (2001)	Germany	Arable	Corn	365	2	—
			Potato	365	2	—
			Winter wheat	365	2	—
Sehy <i>et al.</i> (2003)	Germany	Arable	Maize	365	4	—
Sitaula <i>et al.</i> (1995a)	Norway	Forest	Forest	365	—	3
Sitaula <i>et al.</i> (1995b)	Norway	Forest	Forest	365	1	—
Skiba <i>et al.</i> (1998)	UK	Arable	Oilseed rape	30	1	—
			Spring barley	240	1	—
		Forest	Forest	30-365	10	—
		Grassland	Grass	60-365	5	—
Smith <i>et al.</i> (1998a, b)	UK	Arable	Potato	210-365	3	—
			Spring barley	210	1	—
			Winter wheat	210	1	—
		Grassland	Grass	31-365	6	—
Smith <i>et al.</i> (2000)	Denmark	Forest	Forest	365	—	1
		Grassland	Grass	<365	—	1
	Germany	Forest	Forest	365	—	1
	Norway	Forest	Forest	<365	—	1
	Poland	Forest	Forest	<365	—	1
	Sweden	Forest	Forest	365	—	1
	UK	Forest	Forest	365	—	1
		Grassland	Grass	<365	—	1
Stuedler <i>et al.</i> (1989)	USA	Forest	Forest	180	—	6
Teepe <i>et al.</i> (2004)	Germany	Forest	Forest	180	7	7
Thomas <i>et al.</i> (2004)	New Zealand	Arable	Potato	120	3	—
Van den Pol-Van Dasselar <i>et al.</i> (1998, 1999c)	The Netherlands	Grassland	Grass	30-365	—	14
Van der Weerden <i>et al.</i> (2000)	New Zealand	Arable	Onion	240	5	—
Velthof <i>et al.</i> (1997)	The Netherlands	Grassland	Grass	25-32	16	—
Vermoesen <i>et al.</i> (1996)	Belgium	Arable	Maize	300	1	—
		Grassland	Grass	300-365	2	—
Wang <i>et al.</i> (2005)	Mongolia	Grassland	Grass	365	3	3
Williams <i>et al.</i> (1999)	UK	Grassland	Grass	365	1	—
Yamulki and Jarvis (2002)	UK	Grassland	Grass	22	1	1
Yamulki <i>et al.</i> (1995)	UK	Arable	Winter wheat	365	1	—

Table A2 Summary of studies on the effect of fertiliser type on CH₄ fluxes from soils

Reference	Country	Land use	Measurement days/year	Fertiliser type	Locations
Glatzel and Stahr (2001)	Germany	Grassland	365	Cattle slurry	1
Hansen <i>et al.</i> (1993)	Norway	Arable	36	Ammonium nitrate	1
				Cattle slurry	2
Mosier and Delgado (1997)	Puerto Rico	Grassland	365	Ammonium sulphate	3
Mosier <i>et al.</i> (1991)	USA	Grassland	180	Ammonium nitrate	2
				Urea	1
Mosier <i>et al.</i> (1997b)	USA	Grassland	365	Ammonium nitrate	2
			365	Ammonium sulphate	1
			120	Urea	3
Sitaula <i>et al.</i> (2000a)	Norway	Arable	365	Ammonium nitrate	3
				Cattle slurry	6

Table A3 Summary of studies on the effect of fertiliser type on N₂O fluxes from soils

Reference	Country	Land use	Measurement days/year	Fertiliser type	Locations
Anger <i>et al.</i> (2003)	Germany	Grassland	365	Calcium ammonium nitrate	3
Clayton <i>et al.</i> (1997)	UK	Grassland	365	Ammonium nitrate	2
				Ammonium sulphate	2
				Calcium nitrate	2
				Cattle slurry	1
				Urea	2
Glatzel and Stahr (2001)	Germany	Grassland	365	Cattle slurry	1
Hansen <i>et al.</i> (1993)	Norway	Arable	36	Ammonium nitrate	1
				Cattle slurry	2
Hénault <i>et al.</i> (1998a)	France	Arable	120	Ammonium nitrate	1
				Ammonium sulphate	1
				Potassium nitrate	1
				Urea	1
Hou and Tsuruta (2003)	Japan	Arable	180	Urea	2
Kaiser <i>et al.</i> (1998a)	Germany	Arable	365	Ammonium nitrate urea	24
Kaiser <i>et al.</i> (1998b)	Germany	Grassland	365	Ammonium nitrate	2
				Calcium ammonium nitrate	2
Mosier and Delgado (1997)	Puerto Rico	Grassland	365	Ammonium sulphate	3
Mosier <i>et al.</i> (1991)	USA	Grassland	180	Ammonium nitrate	2
				Urea	1
Mosier <i>et al.</i> (1997b)	USA	Grassland	365	Ammonium nitrate	1
			365	Ammonium sulphate	3
			120	Urea	2
Thomas <i>et al.</i> (2004)	New Zealand	Arable	120	Calcium ammonium nitrate	4

Table A4 Summary of studies on the effect of soil compaction on CH₄ fluxes from soils

Reference	Country	Land use	Measurement days/year	Locations
Flessa <i>et al.</i> (2002a)	Germany	Arable	120	2
Hansen <i>et al.</i> (1993)	Norway	Arable	36	4
Sitaula <i>et al.</i> (2000a)	Norway	Arable	365	12
Teepe <i>et al.</i> (2004)	Germany	Forest	30	3
Yamulki and Jarvis (2002)	UK	Grassland	22	1

Table A5 Summary of studies on the effect of soil compaction on N₂O fluxes from soils

Reference	Country	Land use	Measurement days/year	Treatment	Datasets
Ball <i>et al.</i> (1999a)	UK	Arable	60-180	Heavy compaction	3
				Heavy compaction + loosening to 10 cm	3
				Light compaction	3
Ball <i>et al.</i> (1999b)	UK	Arable	30-180	Heavy compaction	6
				Heavy compaction + loosening to 10 cm	6
				Light compaction	6
Ball <i>et al.</i> (2000)	UK	Arable	365	Heavy compaction	3
				Heavy compaction + loosening to 10 cm	1
Flessa <i>et al.</i> (2002a)	Germany	Arable	120	Heavy compaction	2
Hansen <i>et al.</i> (1993)	Norway	Arable	36	Heavy compaction	4
Teepe <i>et al.</i> (2004)	Germany	Forest	30	Heavy compaction	3
Thomas <i>et al.</i> (2004)	New Zealand	Arable	120	Heavy compaction	3
Yamulki and Jarvis (2002)	UK	Grassland	22	Heavy compaction	1

Table A6 Effects of factors affecting CH₄ and N₂O fluxes from soils. +: positive effect; -: negative effect; +/-: not significant effect; Sign.: significant effect.

Reference	Compaction	N application	Type of fertilizer	Ground water	Soil temperature	Soil moisture	Land use	Compaction	N application	Type of fertilizer	Ground water	Soil temperature	Soil moisture	Land use
Anger <i>et al.</i> (2003)		+	Sign.		+/-, +	+/-								
Ball <i>et al.</i> (1999a)	+	+				+								
Ball <i>et al.</i> (1999b)	+	+				+								
Ball <i>et al.</i> (2000)	+/-	+												
Chen <i>et al.</i> (1997)		+					Sign.	+						
Clayton <i>et al.</i> (1997)		+	Sign.			+								
Dobbie and Smith (1996)								+/-			-	+/-	Sign.	
Dobbie and Smith (2003a)		+				+								
Dobbie <i>et al.</i> (1996)														Sign.
Flessa <i>et al.</i> (1998)		+/-		+			+/-	+/-		+				Sign.
Flessa <i>et al.</i> (2002a)	+	+			+	+	+						+	
Glatzel and Stahr (2001)		+/-						+/-						

Table A6 Effects of factors affecting CH₄ and N₂O fluxes from soils (continued). +: positive effect; -: negative effect; +/-: not significant effect; Sign.: significant effect

Reference	Compaction	N application	Type of fertilizer	Ground water	Soil temperature	Soil moisture	Land use	Compaction	N application	Type of fertilizer	Ground water	Soil temperature	Soil moisture	Land use
Goldman <i>et al.</i> (1995)									-				+/-	
Goodroad and Keeney (1985)		+	Sign .				Sign .							
Goossens <i>et al.</i> (2001)		+	Sign .				Sign .							
Gulledge <i>et al.</i> (1997)									+, +/-					
Hansen <i>et al.</i> (1993)	+	+	Sign .			+		+	+	+/-				
Hénault <i>et al.</i> (1998a)		+	Sign			+	+/-							
Hénault <i>et al.</i> (1998b)		+												
Hou and Tsuruta (2003)		+												
Jørgensen <i>et al.</i> (1997)		+				+								
Kaiser <i>et al.</i> (1998a)		+, +/-				+	Sign .							
Kaiser <i>et al.</i> (1998b)		+			+/-	+/-	Sign .							
Kamp <i>et al.</i> (1998)		+			+	+								
Kasimir-Klemedtsson and Klemedtsson (1997)									+			+	+	
Klemedtsson <i>et al.</i> (1997)		+			+/-	+/-								
Kim and Kim (2002)		+/-					Sign .							
Koga <i>et al.</i> (2004)		+				+			+/-				+	
Kusa <i>et al.</i> (2002)		+/-			+	+/-								
MacDonald <i>et al.</i> (1997)		+	Sign .			+/-			+	Sign .		+	+/-	
Mahmood <i>et al.</i> (1998)					+/-	+/-								
Martikainen <i>et al.</i> (1993)				+, +/-										
Mogge <i>et al.</i> (1998)					+	+								
Mogge <i>et al.</i> (1999)		+	Sign .		+	+/-	Sign .							

Table A6 Effects of factors affecting CH₄ and N₂O fluxes from soils (continued). +: positive effect; -: negative effect; +/-: not significant effect; Sign.: significant effect

Reference	Compaction	N application	Type of fertilizer	Ground water	Soil temperature	Soil moisture	Land use	Compaction	N application	Type of fertilizer	Ground water	Soil temperature	Soil moisture	Land use
Mosier and Delgado (1997)		+				+			+, -, +/-				+	
Mosier <i>et al.</i> (1991)		+				+	Sign.		+				+	Sign.
Mosier <i>et al.</i> (1997b)		+							+/-				+	
Priemé and Christensen (1997)									+			+	+/-	
Ruser <i>et al.</i> (2001)	+	+				+	Sign.							
Sehy <i>et al.</i> (2003)		+				+								
Sitaula <i>et al.</i> (1995a)									+				+	
Sitaula <i>et al.</i> (1995b)		+												
Sitaula <i>et al.</i> (2000a)								+	+	+/-				
Skiba <i>et al.</i> (1998)		+			+	+	Sign.							
Smith <i>et al.</i> (1998a, b)		+			+	+	Sign.							
Smith <i>et al.</i> (2000)								+	+/-			+/-	+	Sign.
Stuedler <i>et al.</i> (1989)									+			+/-	+	
Teepe <i>et al.</i> (2004)	+					+		+					+	
Thomas <i>et al.</i> (2004)	+	+/-				+								
Van den Pol-Van Dassel <i>et al.</i> (1998, 1999c)									+/-	Sign.			+	
Van der Weerden <i>et al.</i> (2000)		+					Sign.							
Velthof <i>et al.</i> (1997)		+	Sign.	+		+								
Vermoesen <i>et al.</i> (1996)	+	+			+		Sign.							
Wang <i>et al.</i> (2005)		+				+			+				+	
Williams <i>et al.</i> (1999)		+			+	+								

Table A6 Effects of factors affecting CH₄ and N₂O fluxes from soils (continued). +: positive effect; -: negative effect; +/-: not significant effect; Sign.: significant effect

Reference	Compaction	N application	Type of fertilizer	Ground water	Soil temperature	Soil moisture	Land use	Compaction	N application	Type of fertilizer	Ground water	Soil temperature	Soil moisture	Land use
Yamulki and Jarvis (2002)	+	+						+/-	+					
Yamulki <i>et al.</i> (1995)		+				+								

References

- Adamsen, A.P.S. and King, G.M., 1993. Methane consumption in temperate and subarctic forest soils: rates, vertical zonation, and responses to water and nitrogen. *Applied and Environmental Microbiology* **59**, 485-490.
- Ambus, P. and Christensen, S., 1995. Spatial and seasonal nitrous oxide and methane fluxes in Danish forest-, grassland-, and agroecosystems. *Journal of Environmental Quality* **24**, 993-1001.
- Anger, M., Hoffman, C. and Kühbauch, W., 2003. Nitrous oxide emissions from artificial urine patches applied to different N-fertilized swards and estimated annual N₂O emissions for differently fertilized pastures in an upland location in Germany. *Soil Use and Management* **19**, 104-111.
- Ball, B.C., Dobbie, K.E., Parker, J.P. and Smith, K.A., 1997a. The influence of gas transport and porosity on methane oxidation in soils. *Journal of Geophysical Research* **102**, 23301-23308.
- Ball, B.C., Smith, K.A., Klemetsson, L., Brumme, R., Sitaula, S., Hansen, S., Christensen, S., Prieme, A., MacDonald, J. and Horgan, G.W., 1997b. The influence of soil gas transport properties on methane oxidation in a selection of northern European soils. *Journal of Geophysical Research* **102**, 23309-23317.
- Ball, B.C., Scott, A., and Parker, J.P., 1999a. Field N₂O, CO₂ and CH₄ fluxes in relation to tillage, compaction and soil quality in Scotland. *Soil & Tillage Research*. **53**, 29-39.
- Ball, B.C., Parker, J.P. and Scott, A., 1999b. Soil and residue management effects on cropping conditions and nitrous oxide fluxes under controlled traffic in Scotland. 2. Nitrous oxide, soil N status and weather. *Soil & Tillage Research* **52**, 191-201.
- Ball, B.C., Horgan, G.W. and Parker, J.P., 2000. Short-range spatial variation of nitrous oxide fluxes in relation to compaction and straw residues. *European Journal of Soil Science* **51**, 607-616.
- Bartlett, K.B. and Harris, R.C., 1993. Review and assessment of methane emissions from wetlands. *Chemosphere* **26**, 261-320.
- Bosse, U., Frenzel, P. and Conrad, R., 1993. Inhibition of methane oxidation by ammonium in the surface layer of a littoral sediment. *FEMS Microbiology Ecology* **13**, 123-134.
- Bouwman, A.F., 1996. Direct emission of nitrous oxide from agricultural soils. *Nutrient Cycling in Agroecosystems* **46**, 53-70.
- Breland, T.A. and Hansen, S., 1996. Nitrogen mineralization and microbial biomass as affected by soil. *Soil Biology and Biogeochemistry* **28**, 655-663.
- Bremner, J.M. and Blackmer, A.M., 1978. Nitrous oxide emission from soils during nitrification of fertilizer nitrogen. *Science* **199**, 295-297.
- Brumme, R. and Beese, F., 1992. Effects of liming and nitrogen fertilization on emissions of CO₂ and N₂O from temperate forest. *Journal of Geophysical Research* **97**, 12851-12858.
- Bubier, J.L., Moore, T.R. and Juggins, S., 1995. Predicting methane emissions from bryophyte distribution in northern Canadian peatlands. *Ecology* **76**, 677-693.
- Campbell, D.J., Dickson, J.W., Ball, B.C. and Hunter, R., 1986. Controlled seedbed traffic after ploughing or direct drilling under winter barley in Scotland 1980-1984. *Soil & Tillage Research* **8**, 3-28.
- Castro, M.S., Steudler, P.A., Melillo, J.M., Aber, J.D. and Millham, S., 1992. Exchange of N₂O and CH₄ between the atmosphere and soils in spruce-fir forests in the northeastern United States. *Biogeochemistry* **18**, 119-135.
- Castro, M.S., Steudler, P.A. and Melillo, J.M., 1995. Factors controlling atmospheric methane consumption by temperate forest soils. *Global Biogeochemical Cycles* **9**, 1-10.
- Chamen, W.C.T., Chithey, E.T., Leede, P.R., Goss, M.J. and Howse, K.R., 1990. The effect of tyre soil contact pressure and zero traffic on soil and crop responses when growing winter wheat. *Journal of Agricultural Engineering Research* **47**, 1-21.
- Chamen, W.C.T., Chithey, E.T., Leede, P.R. and Longstaff, D.J., 1992. Assessment of a wide span vehicle (gantry) and soil and cereal crop responses to its use in a zero traffic regime. *Soil & Tillage Research* **24**, 359-380.
- Chan, A.S.K. and Parkin, T.B., 2001. Effect of land use on methane flux from soil. *Journal of Environmental Quality* **30**, 786-797.
- Chen, G.X., Huang, G.H., Huang, B., Yu, K.W., Wu, J. and Xu, H., 1997. Nitrous oxide and methane emissions from soil plant systems. *Nutrient Cycling in Agroecosystems* **49**, 41-45.
- Christensen, S., 1983. Nitrous oxide emission from a soil under permanent grass: seasonal and diurnal fluctuations as influenced by manuring and fertilization. *Soil Biology and Biogeochemistry* **15**, 531-536.
- Clayton, H., McTaggart, I.P., Parker, J., Swan, L. and Smith, K.A., 1997. Nitrous oxide emissions from fertilized grassland: a 2-year study of the effects of N fertilizer form and environmental conditions. *Biology and Fertility of Soils* **25**, 252-260.

- Clemens, J., Schillinger, M.P., Goldbach, H. and Huwe, B., 1999. Spatial variability of N₂O emissions and soil parameters of an arable silt loam - a field study. *Biology and Fertility of Soils* **28**, 403-406.
- Cochran, V.L., Schlentner, S.F. and Mosier, A.R., 1995. CH₄ and N₂O flux in subarctic agricultural soils. In *Advances in Soil Science* (eds. Lal, R., Kimble, J., Levine, E. and Stewart, B.A.), pp. 179-186. CRC Press, Inc. Boca Raton, FL, USA.
- Crill, P.M., Martikainen, P.J., Nykänen, H. and Silvola, J., 1994. Temperature and N fertilization effects on methane oxidation in a drained peatland soil. *Soil Biology and Biogeochemistry* **26**, 1331-1339.
- Crutzen, P.J., 1981. Atmospheric chemical processes of the oxides of nitrogen including nitrous oxide. In *Denitrification, nitrification and atmospheric N₂O* (ed. C.C. Delwiche), pp. 17-44. Wiley, Chichester.
- Davidson, E.A., 1991. Fluxes of nitrous oxide and nitric oxide from terrestrial ecosystems. In *Microbial production and consumption of greenhouse gases: methane, nitrogen oxides and halomethanes* (eds. J.E. Rogers and W.B. Whitman), pp. 219-235. American Society of Microbiology, Washington, District of Columbia.
- De Klein, C.A.M., Sherlock, R.R., Cameron, K.C. and Van der Weerden, T.J., 2001. Nitrous oxide emissions from agricultural soils in New Zealand. A review of current knowledge and directions for future research. *Journal of the Royal Society of New Zealand* **31(3)**, 543-574.
- Dickson, J.W. and Campbell, D.J., 1990. Soil and crop responses to zero-traffic and conventional-traffic systems for winter barley in Scotland, 1982-1986. *Soil & Tillage Research* **18**, 1-26.
- Dickson, J.W. and Ritchie, R.M., 1990. Zero and conventional traffic systems for ware potato production. *Agricultural Engineering Abstracts* **90**, 102-103.
- Dickson, J.W. and Ritchie, R.M., 1996. Zero and reduced ground pressure traffic systems in an arable rotation. 2. Soil and crop responses. *Soil & Tillage Research* **38**, 89-113.
- Dickson, J.W., Campbell, D.J. and Ritchie, R.M., 1992. Zero and conventional traffic systems for potatoes in Scotland, 1987-1989. *Soil & Tillage Research* **24**, 397-419.
- Dobbie, K.E. and Smith, K.A., 1994. Effect of land use on the rate of uptake of methane by surface soils in northern Europe. *Annals of Geophysics* **12II**, 388.
- Dobbie, K.E. and Smith, K.A., 1996. Comparison of CH₄ oxidation rates in woodland, arable and set aside soils. *Soil Biology and Biogeochemistry* **28**, 1357-1365.
- Dobbie, K.E. and Smith, K.A., 2001. The effects of temperature, water-filled pore space and land use on N₂O emissions from an imperfectly drained gleysol. *European Journal of Soil Science* **52**, 667-673.
- Dobbie, K.E. and Smith, K.A., 2003a. Nitrous oxide emission factors for agricultural soil in Great Britain: the impact of soil water-filled pore space and other controlling variables. *Global Change Biology*. **9**, 204-218.
- Dobbie, K.E. and Smith, K.A., 2003b. Impact of different forms of N fertilizer on N₂O emissions from intensive grassland. *Nutrient Cycling in Agroecosystems* **67**, 37-46.
- Dobbie, K.E., Smith, K.A., Prieme, A., Christensen, S., Degorska, A. and Orlanski, P., 1996. Effect of land use on the rate of methane uptake by surface soils in northern Europe. *Atmospheric Environment*. **30**, 1005-1011.
- Dobbie, K.E., McTaggart, I.P. and Smith, K.A. (1999). Nitrous oxide emissions from intensive agricultural systems: variations between crops and seasons, key driving variables, and mean emission factors. *Journal of Geophysical Research* **104**, 26891-26899.
- Douglas, J.T. and Crawford, C.E., 1993. The response of a ryegrass sward to wheel traffic and applied nitrogen. *Grass and Forage Science* **48**, 91-100.
- Douglas, J.T., Campbell, D.J. and Crawford, C.E., 1992. Soil and crop responses to conventional, reduced ground pressure and zero traffic systems for grass silage production. *Soil & Tillage Research* **24**, 421-439.
- Eichner, M.J., 1990. Nitrous oxide emissions from fertilized soils: summary of available data. *Journal of Environmental Quality* **19**, 272-280.
- Flessa, H., Wild, U., Klemisch, M. and Pfadenhauer, J., 1998. Nitrous oxide and methane fluxes from organic soils under agriculture. *European Journal of Soil Science* **49**, 327-335.
- Flessa, H., Ruser, R., Schilling, R., Löffel, N., Munch, J.C., Kaiser, E.A. and Beese, F., 2002a. N₂O and CH₄ fluxes in potato fields: automated measurement, management effects and temporal variation. *Geoderma* **105**, 307-325.
- Flessa, H., Ruser, R., Dörsch, P., Kamp, T., Jimenez, M.A., Munch, J.C. and Beese, F., 2002b. Integrated evaluation of greenhouse gas emissions (CO₂, CH₄, N₂O) from two farming systems in southern Germany. *Agriculture, Ecosystems and Environment* **91**, 175-189.
- Freney, J.R., 1997. Emission of nitrous oxide from soils used for agriculture. *Nutrient Cycling in Agroecosystems* **49**, 1-6.
- Galbally, I.E., 1985. The emission of nitrogen to the remote atmosphere. In *The biogeochemical cycling of sulfur and nitrogen in the remote atmosphere* (eds. Galloway J.N. et al.), pp. 27-53. Reidel, Dordrecht, The Netherlands.

- Glatzel, S. and Stahr, K., 2001. Methane and nitrous oxide exchange in differently fertilized grassland in southern Germany. *Plant and Soil* **231**, 21-35.
- Goldman, M.B., Groffman, P.M., Pouyat, R.V., McDonnell, M.J. and Pickett, S.T.A., 1995. CH₄ Uptake and N Availability in Forest Soils Along an Urban to Rural Gradient. *Soil Biology and Biochemistry* **27**, 281-286.
- Goodroad, L.L. and Keeney, D.R., 1984. Nitrous oxide production in aerobic soils under varying pH, temperature and water content. *Soil Biology and Biochemistry* **16**, 39-43.
- Goodroad, L.L., and Keeney, D.R., 1985. Site of Nitrous-Oxide Production in Field Soils. *Biology and Fertility of Soils* **1**, 3-7.
- Goossens, A., De Visscher, A., Boeckx, P. and Van Cleemput, O., 2001. Two-year field study on the emission of N₂O from coarse and middle-textured Belgian soils with different land use. *Nutrient Cycling in Agroecosystems* **60**, 23-34.
- Goulding, K.W.T., Hutsch, B.W., Webster, C.P., Willison, T.W. and Powlson, D.S., 1995. The effect of agriculture on methane oxidation in the soil. *Philosophical Transactions of the Royal Society, London* **A351**, 313-325.
- Graham, J.P., Blackwell, P.S., Armstrong, J.V., Christian, D.G., Howse, K.R., Dawson, J.C. and Butler, A.R., 1986. Compaction of a silt loam by wheeled agricultural vehicles. II. Effects on growth and yield of direct drilled winter wheat. *Soil & Tillage Research* **7**, 189-203.
- Grant, B., Smith, W.N., Desjardins, R., Lemke, R. and Li, C., 2004. Estimated N₂O and CO₂ emissions as influenced by agricultural practices in Canada. *Climatic Change* **65**, 315-332.
- Gulledge, J., Doyle, A.P. and Schimel, J.P., 1997. Different NH₄⁺ inhibition patterns of soil CH₄ consumption: a result of distinct CH₄ oxidizer population across sites? *Soil Biology and Biogeochemistry* **29**, 13-21.
- Håkansson, I., Voorhees, W.B. and Riley, H., 1988. Vehicle and wheel factors influencing soil compaction and crop response in different traffic regimes. *Soil & Tillage Research* **11**, 239-282.
- Hansen, S., 1996. Effects of manure treatment and soil compaction on plant production of a dairy farm system converting to organic farming practice. *Agriculture, Ecosystems and Environment* **56**, 173-186.
- Hansen, S., Maehlum, J.E. and Bakken, L.R., 1993. N₂O and CH₄ fluxes in soil influenced by fertilization and tractor traffic. *Soil Biology and Biogeochemistry* **25(5)**, 621-630.
- Heinen, M., 2001. Fussim2: Brief description of the simulation model and application to fertigation scenarios. *Agronomie* **21**, 285-296.
- Hénault, C., Devis, X., Lucas, J.L. and Germon, J.C., 1998a. Influence on different agricultural practices (type of crop, form of N-fertilizer) on soil nitrous oxide emissions. *Biology and Fertility of Soils* **27**, 299-306.
- Hénault, C., Devis, X., Page, S., Justes, E., Reau, R. and Germon, J.C., 1998b. Nitrous oxide emissions under different soil and land management conditions. *Biology and Fertility of Soils* **26**, 199-207.
- Hou, A.X. and Tsuruta, H., 2003. Nitrous oxide and nitric oxide fluxes from an upland field in Japan: effect of urea type, placement, and crop residues. *Nutrient Cycling in Agroecosystems* **65**, 191-200.
- Hütsch, B.W., 1996. Methane oxidation in soils of two long-term fertilization experiments in Germany. *Soil Biology and Biogeochemistry* **28**, 773-782.
- Hütsch, B.W., 1998. Tillage and land use effects on methane oxidation rates and their vertical profiles in the soil. *Biology and Fertility of Soils* **27**, 284-292.
- Hütsch, B.W., Webster, C.P. and Powlson, D.S., 1993. Long-term effects of nitrogen fertilization on methane oxidation in soil of the Broadbalk wheat experiment. *Soil Biology and Biogeochemistry* **25**, 1307-1315.
- Hütsch, B.W., Webster, C.P. and Powlson, D.S., 1994. Methane oxidation in soil as affected by land use, soil pH and N fertilization. *Soil Biology and Biogeochemistry* **26**, 1613-1622.
- IPCC, 2001. Technical summary. In *Climate change 2001: the scientific basis. Contribution of Working Group I of the Intergovernmental Panel on Climate Change* (eds. J.T. Houghton, Y. Ding, D.J. Griggs, M. Noguer, P.J. van der Linden, X. Dai, K. Maskell and C.A. Johnson). Cambridge University Press, Cambridge.
- Jambert, C., Delmas, R., Serca, D., Thouron, L., Labroue, L. and Delprat, L., 1997. N₂O and CH₄ emissions from fertilized agricultural soils in southwest France. *Nutrient Cycling in Agroecosystems* **48**, 105-114.
- Jørgensen, R.N., Jørgensen, B.J., Nielsen, N.E., Maag, M. and Lind, A.M., 1997. N₂O emission from energy crop fields of *Miscanthus Giganteous* and winter rye. *Atmospheric Environment* **31(18)**, 2899-2904.
- Kaiser, E.A., Kohrs, M., Kücke, M., Schnug, E., Heinemeyer, O. and Munch, J.C., 1998a. Nitrous oxide release from arable soil: importance of N-fertilization, crops and season. *Soil Biology and Biogeochemistry* **30**, 1553-1563.
- Kaiser, E.A., Kohrs, M., Kücke, M., Schnug, E., Munch, J.C., and Heinemeyer, O., 1998b. Nitrous oxide release from arable soil: importance of different perennial forage crops. *Biology and Fertility of Soils* **28**, 36-43.
- Kamp, T., Steindl, H., Hantschel, R.E., Beese, F. and Munch, J.C., 1998. Nitrous oxide emissions from a fallow and wheat field as affected by increased soil temperatures. *Biology and Fertility of Soils* **27**, 307-314.
- Kasimir-Klemetsson, A. and Klemetsson, L., 1997. Methane uptake in Swedish forest soil in relation to liming and extra N-deposition. *Biology and Fertility of Soils* **25**, 296-301.

- Klemedtsson, L., Kasimir-Klemedtsson, A. Moldan, F. and Weslien, P., 1997. Nitrous oxide emission from Swedish forest soils in relation to liming and simulated increased N-deposition. *Biology and Fertility of Soils* **25**, 290-295.
- Keller, M., Mitre, M.E. and Stallard, R.F., 1990. Consumption of atmospheric methane in soils of Central Panama: effects of agricultural development. *Global Biogeochemical Cycles* **4**, 21-27.
- Keller, M., Veldkamp, A.M., Weltz, A.M. and Reiners, W.A., 1993. Effect of pasture age on soil trace-gas emissions from a deforested area of Costa Rica. *Nature* **365**, 244-246.
- Kim, D.S. and Kim, J.C., 2002. Soil nitric and nitrous oxide emissions from agricultural and tidal flat fields in southwestern Korea. *Journal of Environmental Engineering and Science* **1**, 359-369.
- King, G.M. and Schnell, S., 1994. Effect of increasing atmospheric methane concentration on ammonium inhibition of soil methane consumption. *Nature* **370**, 282-284.
- Klein Goldewijk, K., Olivier, J.G.J., Peters, J.A.H.W., Coenen, P.W.H.G. and Vreuls, H.H.J., 2005. Greenhouse gas emissions in the Netherlands 1990-2003. National Inventory Report 2005. *RIVM Report 773201009/2005*.
- Koga, N., Tsuruta, H., Sawamoto, T., Nishimura, S. and Yagi, K., 2004. N₂O emission and CH₄ uptake in arable fields managed under conventional and reduced tillage cropping systems in northern Japan. *Global Biogeochemical Cycles* **18**, GB4025, doi:10.1029/2004GB002260.
- Kuikman, P.J., Oudendag, D., Oenema, O., and Velthof, G.L., 2006. Eindrapport Miterra DS. Alterra rapport, in voorbereiding.
- Kusa, K., Sawamoto, T. and Hatano, R., 2002. Nitrous oxide emissions for 6 years from a gray lowland soil cultivated with onions in Hokkaido, Japan. *Nutrient Cycling in Agroecosystems* **63**, 239-247.
- Lamers, J.G., Perdok, U.D., Lumkes, L.M. and Klooster, J.J., 1986. Controlled traffic farming systems in the Netherlands. *Soil & Tillage Research* **8**, 65-76.
- Lessard, R., Rochette, P., Topp, E., Pattey, E., Desjardins, R.L. and Beaumont, G., 1994. Methane and carbon dioxide fluxes from poorly drained adjacent cultivated and forest sites. *Canadian Journal of Soil Science* **74**, 139-146.
- Linn, D.M. and Doran, J.W., 1984. Effect of water-filled pore-space on carbon dioxide and nitrous oxide production in tilled and non-tilled soils. *Soil Science Society of America Journal* **48**, 1267-1272.
- Luizao, F., Matson, P., Livingston, G., Luizao, R. and Vitousek, P., 1989. Nitrous oxide flux following tropical land clearing. *Global Biogeochem. Cycles* **3**, 281-285.
- MacDonald, J.A., Skiba, U., Sheppard, L.J., Ball, B., Roberts, J.D., Smith, K.A. and Fowler, D., 1997. The effect of nitrogen deposition and seasonal variability on methane oxidation and nitrous oxide emission rates in an upland spruce plantation and moorland. *Atmospheric Environment* **31**, 3693-3706.
- Mackenzie, A.F., Fan, M.X. and Cadrin, F., 1997. Nitrous oxide emission as affected by tillage, corn-soybean-alfalfa rotations and nitrogen fertilization. *Canadian Journal of Soil Science* **77**, 145-152.
- Mackenzie, A.F., Fan, M.X. and Cadrin, F., 1998. Nitrous oxide emission in 3 years as affected by tillage, corn-soybean-alfalfa rotations, and nitrogen fertilization. *Journal of Environmental Quality* **27**, 698-703.
- Mahmood, T., Ali, R., Malik, K.A. and Shamsi, S.R.A., 1998. Nitrous oxide emissions from an irrigated sandy-clay loam cropped to maize and wheat. *Biology and Fertility of Soils* **27**, 189-196.
- Martikainen, P.J., Nykanen, H., Crill, P. and Silvola, J., 1993. Effect of a Lowered Water-Table on Nitrous-Oxide Fluxes from Northern Peatlands. *Nature* **366**, 51-53.
- McTaggart, I.P. and Smith, K.A., 1996. Nitrous oxide emissions from grassland and arable soils: effect of crop type and nitrification inhibitors. In *Proceedings 9th Nitrogen Workshop*, pp. 523-526. Braunschweig, Germany.
- Miller, R.W., and Donahue, R.L., 1995. Soils in our environment. 7th edition. Prentice Hall, Englewood Cliffs, NJ.
- Mogge, B., Kaiser, E.A. and Munch, J.C., 1998. Nitrous oxide emissions and denitrification N-losses from forest soils in the Bornhöved Lake Region (Northern Germany). *Soil Biology and Biogeochemistry* **30**, 703-710.
- Mogge, B., Kaiser, E.A. and Munch, J.C., 1999. Nitrous oxide emissions and denitrification N-losses from agricultural soils in the Bornhöved Lake region (Northern Germany): influence of organic fertilizers and land-use. *Soil Biology and Biogeochemistry* **31**, 1245-1252.
- Moore, T.R. and Roulet, N.T., 1993. Methane flux: water table relations in northern wetlands. *Geophysical Research Letters* **20**, 587-590.
- Mosier, A.R. and Delgado, J.A., 1997. Methane and nitrous oxide fluxes in grasslands in western Puerto Rico. *Chemosphere* **35**, 2059-2082.
- Mosier, A.R., Schimel, D., Valentine, D., Bronson, K. and Parton, W., 1991. Methane and nitrous oxide fluxes in native, fertilized and cultivated grasslands. *Nature* **350**, 330-332.
- Mosier, A.R., Parton, W.J., Valentine, D.W., Ojima, D.S., Schimel, D.S. and Delgado, J.A., 1996. CH₄ and N₂O fluxes in the Colorado shortgrass steppe, 1. Impact of landscape and nitrogen addition. *Global Biogeochemical Cycles* **10**, 387-399.

- Mosier, A.R., Parton, W.J., Valentine, D.W., Ojima, D.S., Schimel, D.S. and Heinemeyer, O., 1997a. CH₄ and N₂O fluxes in the Colorado shortgrass steppe, 2. Long-term impact of land use change. *Global Biogeochemical Cycles* **11**, 29-42.
- Mosier, A.R., Delgado, J.A., Cochran, V.L., Valentine, D.W. and Parton, W.J., 1997b. Impact of agriculture on soil consumption of atmospheric CH₄ and a comparison of CH₄ and N₂O flux in subarctic, temperate and tropical grasslands. *Nutrient Cycling in Agroecosystems* **49**, 71-83.
- Mosier, A.R., Kroeze, C., Nevison, C., Oenema, O., Seitzinger, S. and Cleemput, O.V., 1998. Closing the global atmospheric N₂O budget: nitric oxide emissions through the agricultural nitrogen cycle. *Nutrient Cycling in Agroecosystems* **52**, 225-248.
- Mosquera, J., 2005. Precise soil management as a tool to reduce CH₄ and N₂O emissions from agricultural soils. I. Literature review. *In preparation*.
- Mosquera, J., Hofschreuder, P., Erisman, J.W., Mulder, E., van 't Klooster, C.E., Oigink, N., Swierstra, D. en Verdoes, N. (2002). Meetmethode gasvormige emissies uit de veehouderij. *IMAG rapport 2002-12*.
- Mosquera, J., Huis in 't Veld, J.W.H., ter Beek, C. and Hol, J.M.G., 2005a. Precise soil management as a tool to reduce CH₄ and N₂O emissions from agricultural soils. II. Field measurements at arable soils in the Netherlands. *A&F report (in preparation)*.
- Mosquera, J., Huis in 't Veld, J.W.H., ter Beek, C. and Hol, J.M.G., 2005b. Precise soil management as a tool to reduce CH₄ and N₂O emissions from agricultural soils. III. A preliminary study on grassland soils. *A&F report (in preparation)*.
- Nesbit, S.P. and Breitenbeck, G.A., 1992. A laboratory study of factors influencing methane uptake by soils. *Agriculture, Ecosystems and Environment* **41**, 39-54.
- Oenema, O. Velthof, G.L., Yamulki, S. and Jarvis, S.C., 1997. Nitrous oxide emissions from grazed grassland. *Soil Use and Management* **13**, 288-295.
- Ojima, D.S., Valentine, D.W., Mosier, A.R., Parton, W.J. and Schimel, D.S., 1993. Effect of land use change on methane oxidation in temperate forest and grassland soils. *Chemosphere* **26**, 675-685.
- O'Sullivan, M.F., 1992. Deep loosening of a clay loam subsoil in a moist climate and some effects of traffic management. *Soil Use and Management* **8**, 60-67.
- O'Sullivan, M.F. and Ball, B.C., 1993. The shape of the water release characteristic as affected by tillage, compaction and soil type. *Soil & Tillage Research* **25**, 339-349.
- Perdok, U.D. and Lamers, J.G., 1985. Studies of controlled agricultural traffic in the Netherlands. *Proceedings International Conference on Soil Dynamics*, vol. 5, pp. 1070-1086. National Machinery Laboratory, 17-19 June 1985, Auburn (USA).
- Pinto, A.D., Bustamante, M.M.C., Kisselle, K., Burke, R., Zepp, R., Viana, L.T., Varella, R.F. and Molina, M., 2002. Soil emissions of N₂O, NO, and CO₂ in Brazilian Savannas: Effects of vegetation type, seasonality, and prescribed fires. *Journal of Geophysical Research-Atmospheres* **107 (57)**, 1-9.
- Powelson, D.S., Goulding, K.W.T., Willison, T.W., Webster, C.P. and Hütsch, B.W., 1997. The effect of agriculture on methane oxidation in soil. *Nutrient Cycling in Agroecosystems* **49**, 59-70.
- Prather, M., Derwent, R., Ehhalt, D., Fraser, P., Sanhueza, E. and Zhou, X., 1995. Other trace gases and atmospheric chemistry. In *Climate change 1994: radiative forcing of climate change and an evaluation of the IPCC 1992 emission scenarios* (eds. J.T. Houghton *et al.*), pp. 73-126. Cambridge University Press, Cambridge.
- Priemé, A. and Christensen, S., 1997. Seasonal and spatial variation of methane oxidation in a Danish spruce forest. *Soil Biology and Biogeochemistry* **29**, 1165-1172.
- Priemé, A., Christensen, S., Dobbie, K.E. and Smith, K.A., 1997. Slow increase in rate of methane oxidation in soil with time following land use change from arable agriculture to woodland. *Soil Biology and Biogeochemistry* **29**, 1269-1273.
- Rappoldt, C., Dolfing, J., Bakker, G., Palermo, V. and Kuikman, P., 2006. De invloed van bodemcompactie op de emissie van broeikasgassen: Laboratorium metingen en modelberekeningen. *Alterra rapport* **1269**.
- Regina, K., Syväsalo, E., Hannukkala, A. and Esala, M., 2004. Fluxes of N₂O from farmed peat soils in Finland. *European Journal of Soil Science* **55**, 591-599.
- Ruser, R., Flessa, H., Schilling, R., Steindl, H. and Beese, F., 1998. Effects of soil compaction and fertilization on N₂O and CH₄ fluxes in potato fields. *Soil Science Society of America Journal* **62**, 1587-1595.
- Ruser, R., Flessa, H., Schilling, R., Beese, F. and Munch, J.C., 2001. Effect of crop-specific field management and N fertilization on N₂O emissions from a fine-loamy soil. *Nutrient Cycling in Agroecosystems* **59**, 177-191.
- Sahrawat, K.L. and Keeney, D.R., 1986. Nitrous oxide emission from soils. In *Advances in Soil Science, vol. 4* (ed. B.A. Stewart), pp. 103-148. Springer, New York.
- Scott, A., Crichton, I.J. and Ball, B.C., 1999. Long-term monitoring of soil gas fluxes with closed chambers using automated and manual systems. *Journal of Environmental Quality* **28(5)**, 1637-1643.

- Sehy, U., Ruser, R. and Munch, J.C., 2003. Nitrous oxide fluxes from maize fields: relationships to yield, site-specific fertilization and soil conditions. *Agriculture, Ecosystems and Environment* **99**, 97-111.
- Simojoki, A. and Jaakkola, A., 2000. Effect of nitrogen fertilization, cropping and irrigation on soil air composition and nitrous oxide emission in a loamy clay. *European Journal of Soil Science* **51**, 413-424.
- Sitaula, B.K. and Bakken, L.R., 1993. Nitrous oxide release from spruce forest soil: relationships with nitrification, methane uptake, temperature, moisture and fertilization. *Soil Biology and Biogeochemistry* **25**, 1415-1421.
- Sitaula, B.K., Bakken, L.R. and Abrahamsen, G., 1995a. Methane uptake by temperate pine forest soil-effect of N input and soil acidification. *Soil Biology and Biogeochemistry* **27**, 871-880.
- Sitaula, B.K., Bakken, L.R. and Abrahamsen, G., 1995b. Nitrogen fertilization and soil acidification effects on nitrous oxide and carbon dioxide emission from temperate pine forest soil. *Soil Biology and Biogeochemistry* **27**, 1401-1408.
- Sitaula, B.K., Hansen, S., Sitaula, J.I.B. and Bakken, L.R., 2000a. Methane oxidation potentials and fluxes in agricultural soil: effects of fertilization and soil compaction. *Biogeochemistry* **48**, 323-339.
- Sitaula, B.K., Hansen, S., Sitaula, J.I. B. and Bakken, L.R., 2000b. Effects of soil compaction on N₂O emission in agricultural soil. *Chemosphere-Global Change Science* **2**, 367-371.
- Skiba, U., Smith, K.A. and Fowler, D., 1993. Nitrification and denitrification as a source of nitric oxide and nitrous oxide in a sandy loam soil. *Soil Biology and Biogeochemistry* **25**, 1527-1536.
- Skiba, U., Fowler, D. and Smith, K., 1994. Emissions of NO and N₂O from soils. *Environmental Monitoring and Assessment* **31**, 153-158.
- Skiba, U., McTaggart, I.P., Smith, K.A., Hargreaves, K.J. and Fowler, D., 1996. Estimates of nitrous oxide emissions from soils in the UK. *Energy Conservation and Utilities Management* **37**, 1303-1308.
- Skiba, U.M., Sheppard, L.J., MacDonald, J. and Fowler, D., 1998. Some key environmental variables controlling nitrous oxide emissions from agricultural and semi-natural soils in Scotland. *Atmospheric Environment* **32**, 3311-3320.
- Smith, K.A., Thomson, P.E., Clayton, H., McTaggart, I.P. and Conen, F., 1998a. Effects of temperature, water content and nitrogen fertilization on emissions of nitrous oxide by soils. *Atmospheric Environment* **32(19)**, 3301-3309.
- Smith, K.A., McTaggart, I.P., Dobbie, K.E. and Conen, F., 1998b. Emissions of N₂O from Scottish agricultural soils, as a function of fertilizer N. *Nutrient Cycling in Agroecosystems* **52**, 123-130.
- Smith, K.A., Dobbie, K.E., Ball, B.C., Bakken, L.R., Sitaula, B.K., Hansen, S., Brumme, R., Borken, W., Christensen, S., Priemé, A., Fowler, D., MacDonald, J.A., Skiba, U., Klemmedtsson, L., Kasimir-Klemmedtsson, A., Degórska, A. and Orlanski, P., 2000. Oxidation of atmospheric methane in Northern European soils, comparison with other ecosystems, and uncertainties in the global terrestrial sink. *Global Change Biology* **6**, 791-803.
- Soane, B.D. and Van Ouwerkerk, C., 1995. Implications of soil compaction in crop production for the quality of the environment. *Soil & Tillage Research* **35**, 5-22.
- Soane, B.D., Dickson, J.W. and Campbell, D.J., 1982. Compaction by agricultural vehicles: a review III. Incidence and control of compaction in crop production. *Soil & Tillage Research* **2**, 3-36.
- Stuedler, P.A., Bowden, R.D., Melillo, J.M. and Aber, J.D., 1989. Influence of nitrogen fertilization on methane uptake in temperate forest soils. *Nature* **341**, 314-316.
- Syväsalo, E., Regina, K., Pihlatie, M. and Esala, M., 2004. Emissions of nitrous oxide from boreal agricultural clay and loamy sand soils. *Nutrient Cycling in Agroecosystems* **69**, 155-165.
- Teepe, R., Brumme, R., Beese, F. and Ludwig, B., 2004. Nitrous oxide emission and methane consumption following compaction of forest soils. *Soil Science Society of America Journal* **68**, 605-611.
- Thomas, S., Barlow, H., Francis, G. and Hedderley, D., 2004. Emission of nitrous oxide from fertilized potatoes. In *SuperSoil 2004: 3rd Australian New Zealand Soils Conference*, 5-9 December 2004, University of Sydney, Australia.
- Van den Pol-van Dasselaar, A., Van Beusichem, M.L. and Oenema, O., 1997. Effects of grassland management on the emission of methane from intensively managed grasslands on peat soil. *Plant and Soil* **189**, 1-9.
- Van den Pol-van Dasselaar, A., van Beusichem, M.L. and Oenema, O., 1998. Effects of soil moisture content and temperature on methane uptake by grasslands on sandy soils. *Plant and Soil* **204**, 213-222.
- Van den Pol-van Dasselaar, A., van Beusichem, M.L. and Oenema, O., 1999a. Methane emissions from wet grasslands on peat soil in a nature preserve. *Biogeochemistry* **44**, 205-220.
- Van den Pol-van Dasselaar, A., van Beusichem, M.L. and Oenema, O., 1999b. Determinants of spatial variability of methane emissions from wet grasslands on peat soil. *Biogeochemistry* **44**, 221-237.
- Van den Pol-van Dasselaar, A., van Beusichem, M.L. and Oenema, O., 1999c. Effects of nitrogen input and grazing on methane fluxes of extensively and intensively managed grasslands in the Netherlands. *Biology and Fertility of Soils* **29**, 24-30.

- Van der Weerden, T.J., Sherlock, R.R., Williams, P.H. and Cameron, K.C., 2000. Effect of three contrasting onion (*Allium cepa* L.) production systems on nitrous oxide emissions from soil. *Biology and Fertility of Soils* **31**, 334-342.
- Velthof, G.L., and Kuikman, P.J., 2000. Beperking van lachgasemissie uit gewasresten: een systeemanalyse. Alterra rapport 114.3.
- Velthof, G.L., and Oenema, O., 1995. Nitrous oxide fluxes from grasslands in the Netherlands: I. Statistical analysis of flux chamber measurements. *European Journal of Soil Science* **46**, 533-540.
- Velthof, G.L., Jarvis, S.C., Stein, A., Allen, A.G. and Oenema, O., 1996. Spatial variability of nitrous oxide fluxes in mown and grazed grasslands on a poorly drained clay soil. *Soil Biology and Biogeochemistry* **28(9)**, 1215-1225.
- Velthof, G.L., Oenema, O., Postma, R. and Van Beusichem, M.L., 1997. Effects of type and amount of applied nitrogen fertilizer on nitrous oxide fluxes from intensively managed grassland. *Nutrient Cycling in Agroecosystems* **46**, 257-267.
- Vermeulen, G.D. and Klooster, J.J., 1992. The potential of a low ground pressure traffic system to reduce soil compaction on a clayey loam soil. *Soil & Tillage Research* **24**, 337-358.
- Vermoesen, A., Van Cleemput, O. and Hofman, G., 1996. Long-term measurements of N₂O emissions. *Energy Conservation and Utilities Management* **37**, 1279-1284.
- Wang, Y., Xue, M., Zheng, X., Ji, B., Du, R. and Wang, Y., 2005. Effects of environmental factors on N₂O emission from and CH₄ uptake by the typical grasslands in the Inner Mongolia. *Chemosphere* **58**, 205-215.
- Weiss, N.A., 2000. Elementary statistics (4th edition). Addison-Wesley.
- Whalen, S.C., Reeburgh, W.S. and Kizer, K.S., 1991. Methane consumption by taiga. *Global Biogeochemical Cycles* **5**, 261-273.
- Williams, D.L., Ineson, P. and Coward, P.A., 1999. Temporal variations in nitrous oxide fluxes from urine-affected grassland. *Soil Biology and Biogeochemistry* **31**, 779-788.
- Willison, T.W., Goulding, K.W.T. and Powlson, D.S., 1995a. Effect of land use change and methane mixing ratio on methane uptake from United Kingdom soil. *Global Change Biology* **1**, 209-212.
- Willison, T.W., Webster, C.P., Goulding, K.W.T. and Powlson, D.S., 1995b. Methane oxidation in temperate soils: effects of land use and the chemical form of nitrogen fertilizer. *Chemosphere* **30**, 539-546.
- Yamulki, S. and Jarvis, S.C., 2002. Short-term effects of tillage and compaction on nitrous oxide, nitric oxide, nitrogen dioxide, methane and carbon dioxide fluxes from grassland. *Biology and Fertility of Soils* **36**, 224-231.
- Yamulki, S., Goulding, K.W.T., Webster, C.P. and Harrison, R.M., 1995. Studies on NO and N₂O fluxes from a wheat field. *Atmospheric Environment* **29**, 1627-1635.
- Yavitt, J.B., Downey, D.M., Lang, G.E. and Sextone, A.J., 1990. Methane consumption in two temperate forest soils. *Biogeochemistry* **9**, 39-52.
- Yoh, M., Toda, H., Kanda, K. and Tsuruta, H., 1997. Diffusion analysis of N₂O cycling a fertilized soil. *Nutrient Cycling in Agroecosystems* **49**, 29-33.